

**NOTICE!!**

**These documents have been scanned!**

**Do not place un-scanned documents beneath this notice!**

**Do not remove this notice from this file!**

GPO Jacket No. 560-102  
Print Order 61540  
Rise Business Services, LLC  
Job=AZ15 5/14/2019



Box Number= AZ15048



Claim Begin-End: AMC415013-AMC415020

1 Initial Receipt



AZ15048-6

AMC414884-AMC415438

**United States Department of the Interior**  
**Bureau of Land Management**  
 LANDS/RECREATION & PLANNING  
 ONE N CENTRAL AVE  
 PHOENIX, AZ 85004 -2203  
 Phone: 602-417-9200

Receipt

No:

2548155

Transaction #: 2626948

Date of Transaction: 04/11/2012

**ENTERED INTO COMPUTER**

CUSTOMER:

APR 18 2012 *PS*

AJA MINING LLC  
 10923 VALLEROSA ST  
 LAS VEGAS, NV 89141-3927 US

LINE #	QTY	DESCRIPTION	REMARKS	UNIT PRICE	TOTAL
1	8.00	LOCATABLE MINERALS / MINING CLAIMS-NEW, UNADJUD, ONE OR MORE AUTH NOS / NEW MINING CLAIM LOCATION FEE \$34 <b>CASES:</b> AMC415013/\$34.00, AMC415014/\$34.00, AMC415015/\$34.00, AMC415016/\$34.00, AMC415017/\$34.00, AMC415018/\$34.00, AMC415019/\$34.00, AMC415020/\$34.00		- n/a -	272.00
2	8.00	LOCATABLE MINERALS / MINING CLAIMS-NEW, UNADJUD, ONE OR MORE AUTH NOS / NEW MINING CLAIM MAINT FEE \$140 <b>CASES:</b> AMC415013/\$140.00, AMC415014/\$140.00, AMC415015/\$140.00, AMC415016/\$140.00, AMC415017/\$140.00, AMC415018/\$140.00, AMC415019/\$140.00, AMC415020/\$140.00		- n/a -	1120.00
3	8.00	LOCATABLE MINERALS / MINING CLAIMS-NEW, UNADJUD, ONE OR MORE AUTH NOS / NEW MINING CLAIM PROCESSING FEE \$15 <b>CASES:</b> AMC415013/\$15.00, AMC415014/\$15.00, AMC415015/\$15.00, AMC415016/\$15.00, AMC415017/\$15.00, AMC415018/\$15.00, AMC415019/\$15.00, AMC415020/\$15.00		- n/a -	120.00
<b>TOTAL:</b>					<b>\$1,512.00</b>

## PAYMENT INFORMATION

1	AMOUNT:	1512.00	POSTMARKED:	04/09/2012
	TYPE:	CHECK	RECEIVED:	04/11/2012
	CHECK NO:	1034		
	NAME:	AJA MINING LLC 10923 VALLEROSA ST		



	LAS VEGAS NV 89141-3927 US
--	----------------------------

REMARKS

This receipt was generated by the automated BLM Collections and Billing System and is a paper representation of a portion of the official electronic record contained therein.

**NOTICE!!**

**These documents have been scanned!**

**Do not place un-scanned documents beneath this notice!**

**Do not remove this notice from this file!**

GPO Jacket No. 560-102  
Print Order 61540  
Rise Business Services, LLC  
Job=AZ15 5/14/2019



Box Number= AZ15048



Claim Begin-End: AMC415013-AMC415020

2 Correspondence



AZ15048-6

AMC414884-AMC415438



**NO  
DOCUMENTS  
FOUND**

NO DOCUMENTS FOUND  
NO DOCUMENTS FOUND

**NOTICE!!**

**These documents have been scanned!**

**Do not place un-scanned documents beneath this notice!**

**Do not remove this notice from this file!**

GPO Jacket No. 560-102  
Print Order 61540  
Rise Business Services, LLC  
Job=AZ15 5/14/2019



Box Number= AZ15048



Claim Begin-End: AMC415013-AMC415020

3 Transfers



AZ15048-6

AMC414884-AMC415438



**NO  
DOCUMENTS  
FOUND**

NO DOCUMENTS FOUND  
NO DOCUMENTS FOUND

**NOTICE!!**

**These documents have been scanned!**

**Do not place un-scanned documents beneath this notice!**

**Do not remove this notice from this file!**

GPO Jacket No. 560-102  
Print Order 61540  
Rise Business Services, LLC  
Job=AZ15 5/14/2019



Box Number= AZ15048



Claim Begin-End: AMC415013-AMC415020

4 Miscellaneous



AZ15048-6    AMC414884-AMC415438



**NO  
DOCUMENTS  
FOUND**

NO DOCUMENTS FOUND  
NO DOCUMENTS FOUND

**NOTICE!!**

**These documents have been scanned!**

**Do not place un-scanned documents beneath this notice!**

**Do not remove this notice from this file!**

GPO Jacket No. 560-102  
Print Order 61540  
Rise Business Services, LLC  
Job=AZ15 5/14/2019



Box Number= AZ15048



Claim Begin-End: AMC415013-AMC415020

5 Annual Filings



AZ15048-6

AMC414884-AMC415438



DEPARTMENT OF THE INTERIOR  
BUREAU OF LAND MANAGEMENT  
MINING CLAIMS

Run Date/Time: 9/11/2018

MC Maintenance Fees Paid Through the BLM Pay Portal  
(by Date Paid)

Page 30 Of 723

**CBS Receipt: 4240221**

Printed For Lead File # **AMC415013**

Agency Tracking ID: 1534792530

Assessment Year: 2019

Paid On: 8/20/2018

Number of BLM Serial Nr: 90

Total Amount Paid: \$13,950.00

Claim Name	BLM Serial No	Lead File No	Amount Paid
AJA-1	AMC413510	AMC413510	\$155.00
AJA-3	AMC413512	AMC413510	\$155.00
AJA-5	AMC413514	AMC413510	\$155.00
AJA-7	AMC413516	AMC413510	\$155.00
AJA-9	AMC413518	AMC413510	\$155.00
AJA-13	AMC413769	AMC413769	\$155.00
AJA-14	AMC414246	AMC414246	\$155.00
AJA-15	AMC414247	AMC414246	\$155.00
AJA-16	AMC414248	AMC414246	\$155.00
AJA-17	AMC414249	AMC414246	\$155.00
AJA-18	AMC414552	AMC414552	\$155.00
AJA-19	AMC414553	AMC414552	\$155.00
AJA-20	AMC414554	AMC414552	\$155.00
AJA-21	AMC414555	AMC414552	\$155.00
AJA-22	AMC414556	AMC414552	\$155.00
AJA-24	AMC414558	AMC414552	\$155.00
AJA-25	AMC414559	AMC414552	\$155.00
AJA-26	AMC414560	AMC414552	\$155.00
AJA-27	AMC414561	AMC414552	\$155.00
AJA-28	AMC414562	AMC414552	\$155.00
TUT-1	AMC415013	AMC415013	\$155.00
TUT-2	AMC415014	AMC415013	\$155.00
TUT-3	AMC415015	AMC415013	\$155.00
TUT-4	AMC415016	AMC415013	\$155.00

NO WARRANTY IS MADE BY BLM FOR USE OF THE DATA FOR PURPOSES NOT INTENDED BY BLM

**DEPARTMENT OF THE INTERIOR  
BUREAU OF LAND MANAGEMENT  
MINING CLAIMS**

Run Date/Time: 9/11/2018

**MC Maintenance Fees Paid Through the BLM Pay Portal  
(by Date Paid)**

Page 31 Of 723

TUT-5	AMC415017	AMC415013	\$155.00
TUT-6	AMC415018	AMC415013	\$155.00
TUT-7	AMC415019	AMC415013	\$155.00
TUT-8	AMC415020	AMC415013	\$155.00
TUT 9	AMC415597	AMC415597	\$155.00
TUT 10	AMC415598	AMC415597	\$155.00
TUT 11	AMC415599	AMC415597	\$155.00
TUT 12	AMC415600	AMC415597	\$155.00
TUT 13	AMC415601	AMC415597	\$155.00
TUT 14	AMC415602	AMC415597	\$155.00
TUT 15	AMC415603	AMC415597	\$155.00
TUT 16	AMC415604	AMC415597	\$155.00
TUT-17	AMC416173	AMC416173	\$155.00
TUT-18	AMC416174	AMC416173	\$155.00
TUT-19	AMC416175	AMC416173	\$155.00
TUT-20	AMC416176	AMC416173	\$155.00
TUT-21	AMC416177	AMC416173	\$155.00
TUT-22	AMC416178	AMC416173	\$155.00
TUT-23	AMC416179	AMC416173	\$155.00
TUT-24	AMC416180	AMC416173	\$155.00
TUT-25	AMC416181	AMC416173	\$155.00
TUT-26	AMC416182	AMC416173	\$155.00
TUT-27	AMC416183	AMC416173	\$155.00
TUT-28	AMC416184	AMC416173	\$155.00
TUT-29	AMC416646	AMC416646	\$155.00
TUT-30	AMC416647	AMC416646	\$155.00
TUT-31	AMC416648	AMC416646	\$155.00
TUT-32	AMC416649	AMC416646	\$155.00
TUT-33	AMC416650	AMC416646	\$155.00
TUT-34	AMC416651	AMC416646	\$155.00
TUT-35	AMC416652	AMC416646	\$155.00
TUT-36	AMC416653	AMC416646	\$155.00
TUT-37	AMC416654	AMC416646	\$155.00
TUT-38	AMC416655	AMC416646	\$155.00
TUT-39	AMC416656	AMC416646	\$155.00

NO WARRANTY IS MADE BY BLM FOR USE OF THE DATA FOR PURPOSES NOT INTENDED BY BLM



**DEPARTMENT OF THE INTERIOR  
BUREAU OF LAND MANAGEMENT  
MINING CLAIMS**

Run Date/Time: 9/11/2018

**MC Maintenance Fees Paid Through the BLM Pay Portal  
(by Date Paid)**

Page 32 Of 723

TUT-40	AMC416657	AMC416646	\$155.00
TUT-41	AMC416658	AMC416646	\$155.00
TUT-42	AMC416659	AMC416646	\$155.00
TUT-43	AMC416660	AMC416646	\$155.00
TUT-44	AMC416661	AMC416646	\$155.00
TUT-45	AMC416662	AMC416646	\$155.00
TUT-46	AMC416663	AMC416646	\$155.00
TUT-47	AMC416664	AMC416646	\$155.00
TUT-48	AMC416665	AMC416646	\$155.00
TUT-49	AMC416666	AMC416646	\$155.00
TUT-50	AMC416667	AMC416646	\$155.00
TUT-51	AMC416668	AMC416646	\$155.00
TUT-52	AMC416669	AMC416646	\$155.00
TUT-53	AMC416670	AMC416646	\$155.00
TUT-54	AMC416671	AMC416646	\$155.00
TUT-55	AMC416672	AMC416646	\$155.00
TUT-56	AMC416673	AMC416646	\$155.00
TUT-57	AMC416674	AMC416646	\$155.00
TUT-58	AMC416675	AMC416646	\$155.00
TUT-59	AMC416676	AMC416646	\$155.00
TUT-60	AMC416677	AMC416646	\$155.00
TUT-61	AMC416678	AMC416646	\$155.00
TUT-62	AMC416679	AMC416646	\$155.00
TUT-63	AMC416680	AMC416646	\$155.00
TUT-64	AMC416681	AMC416646	\$155.00
TUT-65	AMC416682	AMC416646	\$155.00
TUT-66	AMC416683	AMC416646	\$155.00
TUT-67	AMC416684	AMC416646	\$155.00
TUT-68	AMC416685	AMC416646	\$155.00
TUT-69	AMC416686	AMC416646	\$155.00
TUT-70	AMC416687	AMC416646	\$155.00

NO WARRANTY IS MADE BY BLM FOR USE OF THE DATA FOR PURPOSES NOT INTENDED BY BLM

## United States Department of the Interior

## Bureau of Land Management

BUSINESS &amp; SUPPORT SVCS DIV

ONE N CENTRAL AVE SUITE 800

PHOENIX, AZ 85004 -4427

Phone: 602-417-9200

Receipt

No:

4240221

Transaction #: 4355631

Date of Transaction: 08/20/2018

## CUSTOMER:

THOMAS J ARKOOSH  
 10923 VALLEROSA STREET  
 LAS VEGAS,NV 89141 US

LINE #	QTY	DESCRIPTION	REMARKS	UNIT PRICE	TOTAL
1	1.00	LOCATABLE MINERALS / MINING CLAIMS- NOT NEW-UNADJUD,ONE AUTH NO. ONLY / MINING CLAIM MONEY RECEIVED CASES: AMC413510/\$13950.00		- n/a -	13950.00
<b>TOTAL:</b>					<b>\$13,950.00</b>

## PAYMENT INFORMATION

NOTE: Items will appear on credit card statement as "BLM O Mining Claim".

1	AMOUNT:	13950.00	POSTMARKED:	N/A
	TYPE:	CREDIT CARD	RECEIVED:	08/20/2018
	NAME:	THOMAS J ARKOOSH 10923 VALLEROSA STREET LAS VEGAS NV 89141 US		
	CARD NO:	XXXXXXXXXXXX9416	AUTH CODE:	151278
	NAME ON CARD:	THOMAS J ARKOOSH		
	SIGNATURE:			

## REMARKS

This receipt was generated by the automated BLM Collections and Billing System and is a paper representation of a portion of the official electronic record contained therein.



Run Date: 09/05/17

Run Time: 02:33 PM

**DEPARTMENT OF THE INTERIOR  
BUREAU OF LAND MANAGEMENT  
MINING CLAIMS**

**MC Maintenance Fees Paid Through the BLM Pay Portal**

**CBS Receipt: 3966789**

Printed For Lead File # AMC415013

Agency Tracking ID: 1504130186

Assessment Year: 2018

Number of BLM Serial Nr: 90

Paid On: 08/30/2017

Total Amount Paid: \$13,950.00

Claim Name	BLM Serial No	Lead File No	Amount Paid
AJA-1	AMC413510	AMC413510	\$155.00
AJA-3	AMC413512	AMC413510	\$155.00
AJA-5	AMC413514	AMC413510	\$155.00
AJA-7	AMC413516	AMC413510	\$155.00
AJA-9	AMC413518	AMC413510	\$155.00
AJA-13	AMC413769	AMC413769	\$155.00
AJA-14	AMC414246	AMC414246	\$155.00
AJA-15	AMC414247	AMC414246	\$155.00
AJA-16	AMC414248	AMC414246	\$155.00
AJA-17	AMC414249	AMC414246	\$155.00
AJA-18	AMC414552	AMC414552	\$155.00
AJA-19	AMC414553	AMC414552	\$155.00
AJA-20	AMC414554	AMC414552	\$155.00
AJA-21	AMC414555	AMC414552	\$155.00
AJA-22	AMC414556	AMC414552	\$155.00
AJA-24	AMC414558	AMC414552	\$155.00
AJA-25	AMC414559	AMC414552	\$155.00
AJA-26	AMC414560	AMC414552	\$155.00
AJA-27	AMC414561	AMC414552	\$155.00
AJA-28	AMC414562	AMC414552	\$155.00
TUT-1	AMC415013	AMC415013	\$155.00
TUT-2	AMC415014	AMC415013	\$155.00
TUT-3	AMC415015	AMC415013	\$155.00
TUT-4	AMC415016	AMC415013	\$155.00
TUT-5	AMC415017	AMC415013	\$155.00
TUT-6	AMC415018	AMC415013	\$155.00
TUT-7	AMC415019	AMC415013	\$155.00
TUT-8	AMC415020	AMC415013	\$155.00
TUT 9	AMC415597	AMC415597	\$155.00
TUT 10	AMC415598	AMC415597	\$155.00
TUT 11	AMC415599	AMC415597	\$155.00
TUT 12	AMC415600	AMC415597	\$155.00
TUT 13	AMC415601	AMC415597	\$155.00
TUT 14	AMC415602	AMC415597	\$155.00
TUT 15	AMC415603	AMC415597	\$155.00
TUT 16	AMC415604	AMC415597	\$155.00

**NO WARRANTY IS MADE BY BLM FOR USE OF THE DATA FOR PURPOSES NOT INTENDED BY BLM**

Run Date: 09/05/17

Run Time: 02:33 PM

**DEPARTMENT OF THE INTERIOR  
BUREAU OF LAND MANAGEMENT  
MINING CLAIMS**

**MC Maintenance Fees Paid Through the BLM Pay Portal**

**CBS Receipt: 3966789**

Printed For Lead File # AMC415013

Agency Tracking ID: 1504130186

Assessment Year: 2018

Number of BLM Serial Nr: 90

Paid On: 08/30/2017

Total Amount Paid: \$13,950.00

Claim Name	BLM Serial No	Lead File No	Amount Paid
TUT-17	AMC416173	AMC416173	\$155.00
TUT-18	AMC416174	AMC416173	\$155.00
TUT-19	AMC416175	AMC416173	\$155.00
TUT-20	AMC416176	AMC416173	\$155.00
TUT-21	AMC416177	AMC416173	\$155.00
TUT-22	AMC416178	AMC416173	\$155.00
TUT-23	AMC416179	AMC416173	\$155.00
TUT-24	AMC416180	AMC416173	\$155.00
TUT-25	AMC416181	AMC416173	\$155.00
TUT-26	AMC416182	AMC416173	\$155.00
TUT-27	AMC416183	AMC416173	\$155.00
TUT-28	AMC416184	AMC416173	\$155.00
TUT-29	AMC416646	AMC416646	\$155.00
TUT-30	AMC416647	AMC416646	\$155.00
TUT-31	AMC416648	AMC416646	\$155.00
TUT-32	AMC416649	AMC416646	\$155.00
TUT-33	AMC416650	AMC416646	\$155.00
TUT-34	AMC416651	AMC416646	\$155.00
TUT-35	AMC416652	AMC416646	\$155.00
TUT-36	AMC416653	AMC416646	\$155.00
TUT-37	AMC416654	AMC416646	\$155.00
TUT-38	AMC416655	AMC416646	\$155.00
TUT-39	AMC416656	AMC416646	\$155.00
TUT-40	AMC416657	AMC416646	\$155.00
TUT-41	AMC416658	AMC416646	\$155.00
TUT-42	AMC416659	AMC416646	\$155.00
TUT-43	AMC416660	AMC416646	\$155.00
TUT-44	AMC416661	AMC416646	\$155.00
TUT-45	AMC416662	AMC416646	\$155.00
TUT-46	AMC416663	AMC416646	\$155.00
TUT-47	AMC416664	AMC416646	\$155.00
TUT-48	AMC416665	AMC416646	\$155.00
TUT-49	AMC416666	AMC416646	\$155.00
TUT-50	AMC416667	AMC416646	\$155.00
TUT-51	AMC416668	AMC416646	\$155.00
TUT-52	AMC416669	AMC416646	\$155.00

**NO WARRANTY IS MADE BY BLM FOR USE OF THE DATA FOR PURPOSES NOT INTENDED BY BLM**



Run Date: 09/05/17

Run Time: 02:33 PM

**DEPARTMENT OF THE INTERIOR  
BUREAU OF LAND MANAGEMENT  
MINING CLAIMS**

**MC Maintenance Fees Paid Through the BLM Pay Portal**

**CBS Receipt: 3966789**

Printed For Lead File # AMC415013

Agency Tracking ID: 1504130186

Assessment Year: 2018

Number of BLM Serial Nr: 90

Paid On: 08/30/2017

Total Amount Paid: \$13,950.00

Claim Name	BLM Serial No	Lead File No	Amount Paid
TUT-53	AMC416670	AMC416646	\$155.00
TUT-54	AMC416671	AMC416646	\$155.00
TUT-55	AMC416672	AMC416646	\$155.00
TUT-56	AMC416673	AMC416646	\$155.00
TUT-57	AMC416674	AMC416646	\$155.00
TUT-58	AMC416675	AMC416646	\$155.00
TUT-59	AMC416676	AMC416646	\$155.00
TUT-60	AMC416677	AMC416646	\$155.00
TUT-61	AMC416678	AMC416646	\$155.00
TUT-62	AMC416679	AMC416646	\$155.00
TUT-63	AMC416680	AMC416646	\$155.00
TUT-64	AMC416681	AMC416646	\$155.00
TUT-65	AMC416682	AMC416646	\$155.00
TUT-66	AMC416683	AMC416646	\$155.00
TUT-67	AMC416684	AMC416646	\$155.00
TUT-68	AMC416685	AMC416646	\$155.00
TUT-69	AMC416686	AMC416646	\$155.00
TUT-70	AMC416687	AMC416646	\$155.00

**NO WARRANTY IS MADE BY BLM FOR USE OF THE DATA FOR PURPOSES NOT INTENDED BY BLM**

## United States Department of the Interior

## Bureau of Land Management

BUSINESS &amp; SUPPORT SVCS DIV

ONE N CENTRAL AVE SUITE 800

PHOENIX, AZ 85004 -4427

Phone: 602-417-9200

Receipt

No:

3966789

7

<b>Transaction #:</b> 4076673	
<b>Date of Transaction:</b> 08/30/2017	
CUSTOMER:	
	THOMAS J ARKOOSH 10923 VALLEROSA STREET LAS VEGAS,NV 89141 US

LINE #	QTY	DESCRIPTION	REMARKS	UNIT PRICE	TOTAL
1	1.00	LOCATABLE MINERALS / MINING CLAIMS- NOT NEW-UNADJUD,ONE AUTH NO. ONLY / MINING CLAIM MONEY RECEIVED CASES: AMC416660/\$13950.00		- n/a -	13950.00
TOTAL:					\$13,950.00

PAYMENT INFORMATION				
NOTE: Items will appear on credit card statement as "BLM O Mining Claim".				
1	AMOUNT:	13950.00	POSTMARKED:	N/A
	TYPE:	CREDIT CARD	RECEIVED:	08/30/2017
	NAME:	THOMAS J ARKOOSH 10923 VALLEROSA STREET LAS VEGAS NV 89141 US		
	CARD NO:	XXXXXXXXXXXX9416	AUTH CODE:	145182
	NAME ON CARD:	THOMAS J ARKOOSH		
	EXPIRES:	09/2019		
	SIGNATURE:			

REMARKS

This receipt was generated by the automated BLM Collections and Billing System and is a paper representation of a portion of the official electronic record contained therein.



Run Date: 09/14/16

Run Time: 01:48 PM

**DEPARTMENT OF THE INTERIOR  
BUREAU OF LAND MANAGEMENT  
MINING CLAIMS**

**MC Maintenance Fees Paid Through the BLM Pay Portal**

**CBS Receipt: 3647439**

Printed For Lead File # **AMC415013**

Agency Tracking ID: 1472588596

Assessment Year: 2017

Number of BLM Serial Nr: 90

Paid On: 08/30/2016

Total Amount Paid: \$13,950.00

Claim Name	BLM Serial No	Lead File No	Amount Paid
AJA-1	AMC413510	AMC413510	\$155.00
AJA-3	AMC413512	AMC413510	\$155.00
AJA-5	AMC413514	AMC413510	\$155.00
AJA-7	AMC413516	AMC413510	\$155.00
AJA-9	AMC413518	AMC413510	\$155.00
AJA-13	AMC413769	AMC413769	\$155.00
AJA-14	AMC414246	AMC414246	\$155.00
AJA-15	AMC414247	AMC414246	\$155.00
AJA-16	AMC414248	AMC414246	\$155.00
AJA-17	AMC414249	AMC414246	\$155.00
AJA-18	AMC414552	AMC414552	\$155.00
AJA-19	AMC414553	AMC414552	\$155.00
AJA-20	AMC414554	AMC414552	\$155.00
AJA-21	AMC414555	AMC414552	\$155.00
AJA-22	AMC414556	AMC414552	\$155.00
AJA-24	AMC414558	AMC414552	\$155.00
AJA-25	AMC414559	AMC414552	\$155.00
AJA-26	AMC414560	AMC414552	\$155.00
AJA-27	AMC414561	AMC414552	\$155.00
AJA-28	AMC414562	AMC414552	\$155.00
TUT-1	AMC415013	AMC415013	\$155.00
TUT-2	AMC415014	AMC415013	\$155.00
TUT-3	AMC415015	AMC415013	\$155.00
TUT-4	AMC415016	AMC415013	\$155.00
TUT-5	AMC415017	AMC415013	\$155.00
TUT-6	AMC415018	AMC415013	\$155.00
TUT-7	AMC415019	AMC415013	\$155.00
TUT-8	AMC415020	AMC415013	\$155.00
TUT 9	AMC415597	AMC415597	\$155.00
TUT 10	AMC415598	AMC415597	\$155.00
TUT 11	AMC415599	AMC415597	\$155.00
TUT 12	AMC415600	AMC415597	\$155.00
TUT 13	AMC415601	AMC415597	\$155.00
TUT 14	AMC415602	AMC415597	\$155.00
TUT 15	AMC415603	AMC415597	\$155.00
TUT 16	AMC415604	AMC415597	\$155.00

**NO WARRANTY IS MADE BY BLM FOR USE OF THE DATA FOR PURPOSES NOT INTENDED BY BLM**

Run Date: 09/14/16

Run Time: 01:48 PM

**DEPARTMENT OF THE INTERIOR  
BUREAU OF LAND MANAGEMENT  
MINING CLAIMS**

**MC Maintenance Fees Paid Through the BLM Pay Portal**

**CBS Receipt: 3647439**

Printed For Lead File # AMC415013

Agency Tracking ID: 1472588596

Assessment Year: 2017

Number of BLM Serial Nr: 90

Paid On: 08/30/2016

Total Amount Paid: \$13,950.00

Claim Name	BLM Serial No	Lead File No	Amount Paid
TUT-17	AMC416173	AMC416173	\$155.00
TUT-18	AMC416174	AMC416173	\$155.00
TUT-19	AMC416175	AMC416173	\$155.00
TUT-20	AMC416176	AMC416173	\$155.00
TUT-21	AMC416177	AMC416173	\$155.00
TUT-22	AMC416178	AMC416173	\$155.00
TUT-23	AMC416179	AMC416173	\$155.00
TUT-24	AMC416180	AMC416173	\$155.00
TUT-25	AMC416181	AMC416173	\$155.00
TUT-26	AMC416182	AMC416173	\$155.00
TUT-27	AMC416183	AMC416173	\$155.00
TUT-28	AMC416184	AMC416173	\$155.00
TUT-29	AMC416646	AMC416646	\$155.00
TUT-30	AMC416647	AMC416646	\$155.00
TUT-31	AMC416648	AMC416646	\$155.00
TUT-32	AMC416649	AMC416646	\$155.00
TUT-33	AMC416650	AMC416646	\$155.00
TUT-34	AMC416651	AMC416646	\$155.00
TUT-35	AMC416652	AMC416646	\$155.00
TUT-36	AMC416653	AMC416646	\$155.00
TUT-37	AMC416654	AMC416646	\$155.00
TUT-38	AMC416655	AMC416646	\$155.00
TUT-39	AMC416656	AMC416646	\$155.00
TUT-40	AMC416657	AMC416646	\$155.00
TUT-41	AMC416658	AMC416646	\$155.00
TUT-42	AMC416659	AMC416646	\$155.00
TUT-43	AMC416660	AMC416646	\$155.00
TUT-44	AMC416661	AMC416646	\$155.00
TUT-45	AMC416662	AMC416646	\$155.00
TUT-46	AMC416663	AMC416646	\$155.00
TUT-47	AMC416664	AMC416646	\$155.00
TUT-48	AMC416665	AMC416646	\$155.00
TUT-49	AMC416666	AMC416646	\$155.00
TUT-50	AMC416667	AMC416646	\$155.00
TUT-51	AMC416668	AMC416646	\$155.00
TUT-52	AMC416669	AMC416646	\$155.00

**NO WARRANTY IS MADE BY BLM FOR USE OF THE DATA FOR PURPOSES NOT INTENDED BY BLM**



Run Date: 09/14/16

Run Time: 01:48 PM

**DEPARTMENT OF THE INTERIOR  
BUREAU OF LAND MANAGEMENT  
MINING CLAIMS**

**MC Maintenance Fees Paid Through the BLM Pay Portal**

**CBS Receipt: 3647439**

Printed For Lead File # AMC415013

Agency Tracking ID: 1472588596

Assessment Year: 2017

Number of BLM Serial Nr: 90

Paid On: 08/30/2016

Total Amount Paid: \$13,950.00

Claim Name	BLM Serial No	Lead File No	Amount Paid
TUT-53	AMC416670	AMC416646	\$155.00
TUT-54	AMC416671	AMC416646	\$155.00
TUT-55	AMC416672	AMC416646	\$155.00
TUT-56	AMC416673	AMC416646	\$155.00
TUT-57	AMC416674	AMC416646	\$155.00
TUT-58	AMC416675	AMC416646	\$155.00
TUT-59	AMC416676	AMC416646	\$155.00
TUT-60	AMC416677	AMC416646	\$155.00
TUT-61	AMC416678	AMC416646	\$155.00
TUT-62	AMC416679	AMC416646	\$155.00
TUT-63	AMC416680	AMC416646	\$155.00
TUT-64	AMC416681	AMC416646	\$155.00
TUT-65	AMC416682	AMC416646	\$155.00
TUT-66	AMC416683	AMC416646	\$155.00
TUT-67	AMC416684	AMC416646	\$155.00
TUT-68	AMC416685	AMC416646	\$155.00
TUT-69	AMC416686	AMC416646	\$155.00
TUT-70	AMC416687	AMC416646	\$155.00

**NO WARRANTY IS MADE BY BLM FOR USE OF THE DATA FOR PURPOSES NOT INTENDED BY BLM**

United States Department of the Interior

Bureau of Land Management

BUSINESS & SUPPORT SVCS DIV

ONE N CENTRAL AVE SUITE 800

PHOENIX, AZ 85004 -4427

Phone: (602) 417-9200

Receipt

No:

3647439

Transaction #: 3751426

Date of Transaction: 08/30/2016

CUSTOMER:

THOMAS J ARKOOSH  
10923 VALLEROSA STREET  
LAS VEGAS,NV 89141 US

LINE #	QTY	DESCRIPTION	REMARKS	UNIT PRICE	TOTAL
1	1.00	LOCATABLE MINERALS / MINING CLAIMS- NOT NEW-UNADJUD,ONE AUTH NO. ONLY / MINING CLAIM MONEY RECEIVED CASES: AMC416660/\$13950.00		- n/a -	13950.00
TOTAL:					\$13,950.00

PAYMENT INFORMATION

NOTE: Items will appear on credit card statement as "BLM O Mining Claim".

1	AMOUNT:	13950.00	POSTMARKED:	N/A
	TYPE:	CREDIT CARD	RECEIVED:	08/30/2016
	NAME:	THOMAS J ARKOOSH 10923 VALLEROSA STREET LAS VEGAS NV 89141 US		
	CARD NO:	XXXXXXXXXXXX9416	AUTH CODE:	122060
	NAME ON CARD:	THOMAS J ARKOOSH		
	EXPIRES:	09/2019		
	SIGNATURE:			

REMARKS

This receipt was generated by the automated BLM Collections and Billing System and is a paper representation of a portion of the official electronic record contained therein.



Run Date: 08/17/15

Run Time: 02:46 PM

**DEPARTMENT OF THE INTERIOR  
BUREAU OF LAND MANAGEMENT  
MINING CLAIMS**

**MC Maintenance Fees Paid Through the BLM Pay Portal**

**CBS Receipt: 3363627**

Printed For Lead File # **AMC415013**

Agency Tracking ID: 1439228150

Assessment Year: 2016

Number of BLM Serial Nr: 70

Paid On: 08/10/2015

Total Amount Paid: \$10,850.00

Claim Name	BLM Serial No	Lead File No	Amount Paid
TUT-1	AMC415013	AMC415013	\$155.00
TUT-2	AMC415014	AMC415013	\$155.00
TUT-3	AMC415015	AMC415013	\$155.00
TUT-4	AMC415016	AMC415013	\$155.00
TUT-5	AMC415017	AMC415013	\$155.00
TUT-6	AMC415018	AMC415013	\$155.00
TUT-7	AMC415019	AMC415013	\$155.00
TUT-8	AMC415020	AMC415013	\$155.00
TUT 9	AMC415597	AMC415597	\$155.00
TUT 10	AMC415598	AMC415597	\$155.00
TUT 11	AMC415599	AMC415597	\$155.00
TUT 12	AMC415600	AMC415597	\$155.00
TUT 13	AMC415601	AMC415597	\$155.00
TUT 14	AMC415602	AMC415597	\$155.00
TUT 15	AMC415603	AMC415597	\$155.00
TUT 16	AMC415604	AMC415597	\$155.00
TUT-17	AMC416173	AMC416173	\$155.00
TUT-18	AMC416174	AMC416173	\$155.00
TUT-19	AMC416175	AMC416173	\$155.00
TUT-20	AMC416176	AMC416173	\$155.00
TUT-21	AMC416177	AMC416173	\$155.00
TUT-22	AMC416178	AMC416173	\$155.00
TUT-23	AMC416179	AMC416173	\$155.00
TUT-24	AMC416180	AMC416173	\$155.00
TUT-25	AMC416181	AMC416173	\$155.00
TUT-26	AMC416182	AMC416173	\$155.00
TUT-27	AMC416183	AMC416173	\$155.00
TUT-28	AMC416184	AMC416173	\$155.00
TUT-29	AMC416646	AMC416646	\$155.00
TUT-30	AMC416647	AMC416646	\$155.00
TUT-31	AMC416648	AMC416646	\$155.00
TUT-32	AMC416649	AMC416646	\$155.00
TUT-33	AMC416650	AMC416646	\$155.00
TUT-34	AMC416651	AMC416646	\$155.00
TUT-35	AMC416652	AMC416646	\$155.00
TUT-36	AMC416653	AMC416646	\$155.00

**NO WARRANTY IS MADE BY BLM FOR USE OF THE DATA FOR PURPOSES NOT INTENDED BY BLM**

**DEPARTMENT OF THE INTERIOR  
BUREAU OF LAND MANAGEMENT  
MINING CLAIMS**

**MC Maintenance Fees Paid Through the BLM Pay Portal**

<b>Claim Name</b>	<b>BLM Serial No</b>	<b>Lead File No</b>	<b>Amount Paid</b>
TUT-37	AMC416654	AMC416646	\$155.00
TUT-38	AMC416655	AMC416646	\$155.00
TUT-39	AMC416656	AMC416646	\$155.00
TUT-40	AMC416657	AMC416646	\$155.00
TUT-41	AMC416658	AMC416646	\$155.00
TUT-42	AMC416659	AMC416646	\$155.00
TUT-43	AMC416660	AMC416646	\$155.00
TUT-44	AMC416661	AMC416646	\$155.00
TUT-45	AMC416662	AMC416646	\$155.00
TUT-46	AMC416663	AMC416646	\$155.00
TUT-47	AMC416664	AMC416646	\$155.00
TUT-48	AMC416665	AMC416646	\$155.00
TUT-49	AMC416666	AMC416646	\$155.00
TUT-50	AMC416667	AMC416646	\$155.00
TUT-51	AMC416668	AMC416646	\$155.00
TUT-52	AMC416669	AMC416646	\$155.00
TUT-53	AMC416670	AMC416646	\$155.00
TUT-54	AMC416671	AMC416646	\$155.00
TUT-55	AMC416672	AMC416646	\$155.00
TUT-56	AMC416673	AMC416646	\$155.00
TUT-57	AMC416674	AMC416646	\$155.00
TUT-58	AMC416675	AMC416646	\$155.00
TUT-59	AMC416676	AMC416646	\$155.00
TUT-60	AMC416677	AMC416646	\$155.00
TUT-61	AMC416678	AMC416646	\$155.00
TUT-62	AMC416679	AMC416646	\$155.00
TUT-63	AMC416680	AMC416646	\$155.00
TUT-64	AMC416681	AMC416646	\$155.00
TUT-65	AMC416682	AMC416646	\$155.00
TUT-66	AMC416683	AMC416646	\$155.00
TUT-67	AMC416684	AMC416646	\$155.00
TUT-68	AMC416685	AMC416646	\$155.00
TUT-69	AMC416686	AMC416646	\$155.00
TUT-70	AMC416687	AMC416646	\$155.00

**NO WARRANTY IS MADE BY BLM FOR USE OF THE DATA FOR PURPOSES NOT INTENDED BY BLM**



**United States Department of the Interior**  
**Bureau of Land Management**  
BUSINESS & SUPPORT SVCS DIV  
ONE N CENTRAL AVE SUITE 800  
PHOENIX, AZ 85004 -4427  
Phone: (602) 417-9200

Receipt

No: 3363627

**Transaction #:** 3461662**Date of Transaction:** 08/10/2015**CUSTOMER:**

THOMAS J ARKOOSH  
10923 VALLEROSA STREET  
LAS VEGAS,NV 89141 US

LINE #	QTY	DESCRIPTION	REMARKS	UNIT PRICE	TOTAL
1	1.00	LOCATABLE MINERALS / MINING CLAIMS- NOT NEW-UNADJUD,ONE AUTH NO. ONLY / MINING CLAIM MONEY RECEIVED CASES: AMC416669/\$10850.00		- n/a -	10850.00
<b>TOTAL:</b>					<b>\$10,850.00</b>

**PAYMENT INFORMATION**

NOTE: Items will appear on credit card statement as "BLM O Mining Claim".

1	AMOUNT:	10850.00	POSTMARKED:	N/A
	TYPE:	CREDIT CARD	RECEIVED:	08/10/2015
	NAME:	THOMAS J ARKOOSH 10923 VALLEROSA STREET LAS VEGAS NV 89141 US		
	CARD NO:	XXXXXXXXXXXX2466	AUTH CODE:	143771
	NAME ON CARD:	THOMAS J ARKOOSH		
	EXPIRES:	12/2015		
	SIGNATURE:			

**REMARKS**

This receipt was generated by the automated BLM Collections and Billing System and is a paper representation of a portion of the official electronic record contained therein.

AMC 415013

~~415013~~

415597

416173

## MAINTENANCE FEE PAYMENT

Claimant Name: AJA MINING LLCAddress: 10923 VALLEROSA STREETCity: LAS VEGAS State: NV Zip: 89141Telephone: 702-834-8775E-mail address: AJAMINING@GMAIL.COMSignature: Thomas J. Arboosh☐ Check here if this is a change of address.BLM  
Date  
StampRECEIVED  
BLM AZ STATE OFFICE  
2014 AUG - 4 P 2:33  
PHOENIX, ARIZONA

LINE NO.	AMC NUMBER	CLAIM/SITE NAME	COUNTY RECORDER DATA (If available)	TWP	RNG	SEC
1	415013	TUT-1	2012017517	29N	17W	4
2	415014	TUT-2	2012017518	29N	17W	4
3	415015	TUT-3	2012017519	29N	17W	4
4	415016	TUT-4	2012017520	29N	17W	4
5	415017	TUT-5	2012017521	29N	17W	4
6	415018	TUT-6	2012017522	29N	17W	4
7	415019	TUT-7	2012017523	29N	17W	4
8	415020	TUT-8	2012017524	29N	17W	4
9	415597	TUT-9	2012020876	29N	17W	4
10	415598	TUT-10	2012020877	29N	17W	4

List additional claims on Form MCF114.

Bureau of Land Management  
Arizona State Office  
[www.blm.gov/az/](http://www.blm.gov/az/)No. of Claims: 20 x \$155 = \$3,100.00Check No: 1088 Init. CAHReceipt No.: 3093474

For BLM Use Only

Form: MCF112  
Revised July 2009

This form is available from the Arizona Department of Mines and Mineral Resources and may be reproduced.

ENTERED  
AUG - 6 2014  
BY: Ram



## MENT

**Check One.**

- RECEIVED  
BLM AZ STATE OFF  
2014 AUG -4 P 2  
PHOENIX, ARIZO  
BLM  
Date  
Stamp

**Form MCF114**  
Revised June 2005

This form is available from the **Arizona Department of Mines & Mineral Resources** and may be reproduced.

AJA Mining LLC  
10923 Vallerosa Street  
Las Vegas, NV 89141

LAS VEGAS NV 890

02 AUG 2014 PM 4 L



RECEIVED  
BLM AZ STATE OFFICE

2014 AUG -4 P 2:33

Bureau of Land Management  
PHOENIX, ARIZONA  
ONE NORTON Central AVE  
Suite 800  
Phoenix, AZ 85004-2203

85004442700





AJA Mining LLC  
10923 Vallerosa Street  
Las Vegas, NV 89141

LAS VEGAS NV 890

02 AUG 2014 PM 4 L



RECEIVED  
BLM AZ STATE OFFICE

2014 AUG -4 P 2:33

Bureau of Land Management

PHOENIX, ARIZONA  
ONE N 19th Ave Central AVE

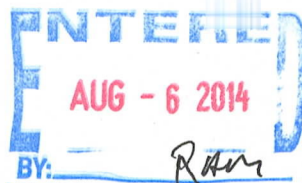
Suite 800

Phoenix, AZ 85004-2203

85004442700



**United States Department of the Interior**  
**Bureau of Land Management**  
 LANDS/RECREATION & PLANNING  
 ONE N CENTRAL AVE  
 PHOENIX, AZ 85004 -2203  
 Phone: 602-417-9200



Receipt

No: 3093474

<b>Transaction #:</b> 3184921	
<b>Date of Transaction:</b> 08/05/2014	
<b>CUSTOMER:</b>	
	AJA MINING LLC 10923 VALLEROSA ST LAS VEGAS,NV 89141-3927 US

LINE #	QTY	DESCRIPTION	REMARKS	UNIT PRICE	TOTAL
1	1.00	LOCATABLE MINERALS / MINING CLAIMS-NOT NEW-UNADJUD,ONE AUTH NO. ONLY / MINING CLAIM MONEY RECEIVED CASES: AMC415013/\$3100.00	MAINT FEE PYMNT (20) 2015	- n/a -	3100.00
<b>TOTAL:</b>					<b>\$3,100.00</b>

PAYMENT INFORMATION			
1	AMOUNT:	3100.00	POSTMARKED: 08/02/2014
	TYPE:	CHECK	RECEIVED: 08/04/2014
	CHECK NO:	1088	
	NAME:	AJA MINING LLC 10923 VALLEROSA ST LAS VEGAS NV 89141-3927 US	

REMARKS

This receipt was generated by the automated BLM Collections and Billing System and is a paper representation of a portion of the official electronic record contained therein.



AJA Mining LLC

Maintenance 2014

103 Claims

Lead File #'s

415013

415507

416173

416646

413510

413769

414246

414511

**MAINTENANCE FEE PAYMENT**

Claimant Name: AJA MINING LLC  
Address: 10923 VALLEROSA STREET  
City: LAS VEGAS State: NV Zip: 89141  
Telephone: 702-834-8775  
E-mail address: AJAMining@gmail.com  
Signature: \_\_\_\_\_

BLM  
Date  
Stamp

☐ Check here if this is a change of address.

LINE NO.	AMC NUMBER	CLAIM/SITE NAME	COUNTY RECORDER DATA (If available)	TWP	RNG	SEC
1	415013	TUT-1	2012017517	29N	17W	4
2	415014	TUT-2	2012017518	29N	17W	4
3	415015	TUT-3	2012017519	29N	17W	4
4	415016	TUT-4	2012017520	29N	17W	4
5	415017	TUT-5	2012017521	29N	17W	4
6	415018	TUT-6	2012017522	29N	17W	4
7	415019	TUT-7	2012017523	29N	17W	4
8	415020	TUT-8	2012017524	29N	17W	4
9	415597	TUT-9	2012020876	29N	17W	4
10	415598	TUT-10	2012020877	29N	17W	4

List additional claims on Form MCF114.

Bureau of Land Management  
Arizona State Office  
[www.blm.gov/az/](http://www.blm.gov/az/)

No. of Claims: 103 x \$140 = \$14420.00  
Check No: 1074 Init. AA  
Receipt No.: 2842663  
For BLM Use Only

Form: MCF112  
Revised July 2009

This form is available from the Arizona Department of Mines and Mineral Resources and may be reproduced.

ENTERED INTO COMPUTER

AUG 08 2013

TS

# SUPPLEMENTAL ATTACHMENT

May be used with the following forms for listing additional mining claims:

Check One.

- ☐ Affidavit of Performance of Annual Work
- ☒ Maintenance Fee Payment
- ☐ Notice of Intent to Hold Mining Claims
- ☐ Notice of Non-Liability for Labor and Materials Furnished

BLM  
Date  
Stamp

LINE NO.	AMC NUMBER	CLAIM/SITE NAME	COUNTY RECORDER DATA (If available)	TWP	RNG	SEC
11	415599	TUT-11	2012020878	29N	17W	4
12	415600	TUT-12	2012020879	29N	17W	4
13	415601	TUT-13	2012020880	29N	17W	9
14	415602	TUT-14	2012020881	29N	17W	9
15	415603	TUT-15	2012020882	29N	17W	9
16	415604	TUT-16	2012020883	29N	17W	9
17	416173	TUT-17	2012027292	29N	17W	4
18	416174	TUT-18	2012027293	29N	17W	4
19	416175	TUT-19	2012027294	29N	17W	4
20	416176	TUT-20	2012027295	29N	17W	4
21	416177	TUT-21	2012027296	29N	17W	4
22	416178	TUT-22	2012027297	29N	17W	4
23	416179	TUT-23	2012027298	29N	17W	4
24	416180	TUT-24	2012027299	29N	17W	4
25	416181	TUT-25	2012027300	30N	17W	33
26	416182	TUT-26	2012027301	30N	17W	33
27	416183	TUT-27	2012027302	30N	17W	33
28	416184	TUT-28	2012027303	30N	17W	33
29	416646	TUT-29	2012035096	29N	17W	9

Form MCF114  
Revised June 2005

This form is available from the Arizona Department of Mines & Mineral Resources and may be reproduced.



# SUPPLEMENTAL ATTACHMENT

May be used with the following forms for listing additional mining claims:

Check One.

- ☐ Affidavit of Performance of Annual Work
- ☒ Maintenance Fee Payment
- ☐ Notice of Intent to Hold Mining Claims
- ☐ Notice of Non-Liability for Labor and Materials Furnished

BLM  
Date  
Stamp

LINE NO.	AMC NUMBER	CLAIM/SITE NAME	COUNTY RECORDER DATA (If available)	TWP	RNG	SEC
30	416647	TUT-30	2012035097	29N	17W	9
31	416648	TUT-31	2012035098	29N	17W	17
32	416649	TUT-32	2012035099	29N	17W	16
33	416650	TUT-33	2012035100	29N	17W	17
34	416651	TUT-34	2012035101	29N	17W	16
35	416652	TUT-35	2012035102	29N	17W	17
36	416653	TUT-36	2012035103	29N	17W	16
37	416654	TUT-37	2012035104	29N	17W	17
38	416655	TUT-38	2012035105	29N	17W	16
39	416656	TUT-39	2012035106	29N	17W	17
40	416657	TUT-40	2012035107	29N	17W	16
41	416658	TUT-41	2012035108	29N	17W	17
42	416659	TUT-42	2012035109	29N	17W	16
43	416660	TUT-43	2012035110	29N	17W	17
44	416661	TUT-44	2012035111	29N	17W	16
45	416662	TUT-45	2012035112	29N	17W	17
46	416663	TUT-46	2012035113	29N	17W	16
47	416664	TUT-47	2012035114	29N	17W	16
48	416665	TUT-48	2012035115	29N	17W	16

Form MCF114  
Revised June 2005

This form is available from the Arizona Department of Mines & Mineral Resources and may be reproduced.

# SUPPLEMENTAL ATTACHMENT

May be used with the following forms for listing additional mining claims:

Check One.

- ☐ Affidavit of Performance of Annual Work
- ☒ Maintenance Fee Payment
- ☐ Notice of Intent to Hold Mining Claims
- ☐ Notice of Non-Liability for Labor and Materials Furnished

BLM  
Date  
Stamp

LINE NO.	AMC NUMBER	CLAIM/SITE NAME	COUNTY RECORDER DATA (If available)	TWP	RNG	SEC
49	416666	TUT - 49	2012035116	29N	17W	16
50	416667	TUT - 50	2012035117	29N	17W	16
51	416668	TUT - 51	2012035118	29N	17W	16
52	416669	TUT - 52	2012035119	29N	17W	16
53	416670	TUT - 53	2012035120	29N	17W	16
54	416671	TUT - 54	2012035121	29N	17W	16
55	416672	TUT - 55	2012035122	29N	17W	17
56	416673	TUT - 56	2012035123	29N	17W	17
57	416674	TUT - 57	2012035124	29N	17W	17
58	416675	TUT - 58	2012035125	29N	17W	17
59	416676	TUT - 59	2012035126	29N	17W	17
60	416677	TUT - 60	2012035127	29N	17W	17
61	416678	TUT - 61	2012035128	29N	17W	17
62	416679	TUT - 62	2012035129	29N	17W	17
63	416680	TUT - 63	2012035130	29N	17W	17
64	416681	TUT - 64	2012035131	29N	17W	17
65	416682	TUT - 65	2012035132	29N	17W	17
66	416683	TUT - 66	2012035133	29N	17W	17
67	416684	TUT - 67	2012035134	29N	17W	17

Form MCF114  
Revised June 2005

This form is available from the Arizona Department of Mines & Mineral Resources and may be reproduced.

# SUPPLEMENTAL ATTACHMENT

May be used with the following forms for listing additional mining claims:

Check One.

- ☐ Affidavit of Performance of Annual Work
- ☒ Maintenance Fee Payment
- ☐ Notice of Intent to Hold Mining Claims
- ☐ Notice of Non-Liability for Labor and Materials Furnished

BLM  
Date  
Stamp

LINE NO.	AMC NUMBER	CLAIM/SITE NAME	COUNTY RECORDER DATA (If available)	TWP	RNG	SEC
68	416685	TUT-68	2012035135	29N	17W	17
69	416686	TUT-69	2012035136	29N	17W	17
70	416687	TUT-70	2012035137	29N	17W	17
71	413510	AJA-1	2012002175	30N	17W	28
72	413511	AJA-2	2012002176	30N	17W	28
73	413512	AJA-3	2012002177	30N	17W	28
74	413513	AJA-4	2012002178	30N	17W	28
75	413514	AJA-5	2012002179	30N	17W	28
76	413515	AJA-6	2012002180	30N	17W	28
77	413516	AJA-7	2012002181	30N	17W	28
78	413517	AJA-8	2012002182	30N	17W	28
79	413518	AJA-9	2012002183	30N	17W	28
80	413519	AJA-10	2012002184	30N	17W	28
81	413520	AJA-11	2012002185	30N	17W	28
82	413521	AJA-12	2012002186	30N	17W	28
83	413769	AJA-13	2012004595	30N	17W	28
84	414246	AJA-14	2012009383	30N	17W	28
85	414247	AJA-15	2012009384	30N	17W	28
86	414248	AJA-16	2012009385	30N	17W	28

Form MCF114  
Revised June 2005

This form is available from the Arizona Department of Mines & Mineral Resources and may be reproduced.



# SUPPLEMENTAL ATTACHMENT

May be used with the following forms for listing additional mining claims:

Check One.

- ☐ Affidavit of Performance of Annual Work
- ☒ Maintenance Fee Payment
- ☐ Notice of Intent to Hold Mining Claims
- ☐ Notice of Non-Liability for Labor and Materials Furnished

BLM  
Date  
Stamp

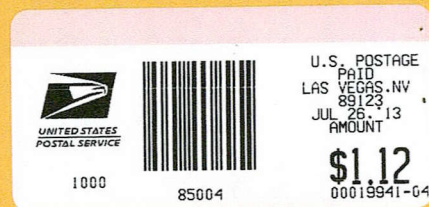
LINE NO.	AMC NUMBER	CLAIM/SITE NAME	COUNTY RECORDER DATA (If available)	TWP	RNG	SEC
87	414249	AJA-17	2012009 386	30N	17W	28
88	414552	AJA-18	2012013 857	30N	17W	28
89	414553	AJA-19	2012013 858	30N	17W	33
90	414554	AJA-20	2012013 859	30N	17W	33
91	414555	AJA-21	2012013 860	30N	17W	33
92	414556	AJA-22	2012013 861	30N	17W	33
93	414557	AJA-23	2012013 862	30N	17W	33
94	414558	AJA-24	2012013 863	30N	17W	33
95	414559	AJA-25	2012013 864	30N	17W	33
96	414560	AJA-26	2012013 865	30N	17W	33
97	414561	AJA-27	2012013 866	30N	17W	33
98	414562	AJA-28	2012013 867	30N	17W	33
99	414563	AJA-29	2012013 868	30N	17W	33
100	414564	AJA-30	2012013 869	30N	17W	34
101	414565	AJA-31	2012013 870	30N	17W	34
102	414566	AJA-32	2012013 871	30N	17W	33
103	414567	AJA-33	2012013 872	30N	17W	28

Form MCF114  
Revised June 2005

This form is available from the Arizona Department of Mines & Mineral Resources and may be reproduced.

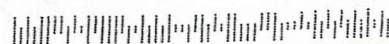


AJA MINING LLC  
10923 VALLEROSA STREET  
LAS VEGAS, NV 89141



Bureau of Land Management  
ONE NORTH CENTRAL AVE  
SUITE 800  
PHOENIX, AZ 85004-4427

PHOENIX, ARIZONA  
2013 JUL 26 PM 2:13  
RECEIVED  
BLM AZ STATE OFFICE



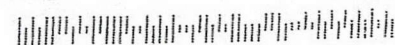


AJA MINING LLC  
10923 VALLEROSA STREET  
LAS VEGAS, NV 89141



Bureau of Land Management  
ONE NORTH CENTRAL AVE  
SUITE 800  
PHOENIX, AZ 85004-4427

PHOENIX, ARIZONA  
2013 JUL 26 PM 2:13  
BLM AZ OFFICE  
RECEIVED





**United States Department of the Interior**  
**Bureau of Land Management**  
LANDS/RECREATION & PLANNING  
ONE N CENTRAL AVE  
PHOENIX, AZ 85004 -2203  
Phone: 602-417-9200

Receipt

No: 2842663

<b>Transaction #:</b> 2928290	
<b>Date of Transaction:</b> 07/30/2013	
<b>CUSTOMER:</b>	
	AJA MINING LLC 10923 VALLEROSA ST LAS VEGAS,NV 89141-3927 US

LINE #	QTY	DESCRIPTION	REMARKS	UNIT PRICE	TOTAL
1	1.00	LOCATABLE MINERALS / MINING CLAIMS-NOT NEW-UNADJUD,ONE AUTH NO. ONLY / MINING CLAIM MONEY RECEIVED CASES: AMC415013/\$14420.00	MAINT FEE PYMNT (103) 2014	- n/a -	14420.00
<b>TOTAL:</b>					<b>\$14,420.00</b>

PAYMENT INFORMATION				
1	AMOUNT:	14420.00	POSTMARKED:	07/26/2013
	TYPE:	CHECK	RECEIVED:	07/29/2013
	CHECK NO:	1074		
	NAME:	AJA MINING LLC 10923 VALLEROSA ST LAS VEGAS NV 89141-3927 US		

<b>REMARKS</b>

This receipt was generated by the automated BLM Collections and Billing System and is a paper representation of a portion of the official electronic record contained therein.

AMC 413510

AMC 415013

413769

415597

414246

416173

414552

416646

## MAINTENANCE FEE PAYMENT

Claimant Name: AJA Mining LLCAddress: 10923 Vallerosa StreetCity: Las Vegas State: NV Zip: 89141Telephone: 702-834-8775E-mail address: AJAMining@gmail.comSignature: Thomas J. Ashworth☐ Check here if this is a change of address.BLM  
Date  
StampRECEIVED  
BLM AZ STATE OFFICE,  
PHOENIX, ARIZONA  
2012 AUG 20 A 10:41

LINE NO.	AMC NUMBER	CLAIM/SITE NAME	COUNTY RECORDER DATA (If available)	TWP	RNG	SEC
1	413510	AJA - 1	2012002175	30N	17W	28
2	413511	AJA - 2	2012002176	30N	17W	28
3	413512	AJA - 3	2012002177	30N	17W	28
4	413513	AJA - 4	2012002178	30N	17W	28
5	413514	AJA - 5	2012002179	30N	17W	28
6	413515	AJA - 6	2012002180	30N	17W	28
7	413516	AJA - 7	2012002181	30N	17W	28
8	413517	AJA - 8	2012002182	30N	17W	28
9	413518	AJA - 9	2012002183	30N	17W	28
10	413519	AJA - 10	2012002184	30N	17W	28

List additional claims on Form MCF114.

Bureau of Land Management  
Arizona State Office  
www.blm.gov/az/No. of Claims: 103 x \$140 = 14420.00Check No: 1070 Init. AAReceipt No.: 2635573

For BLM Use Only

Form: MCF112

Revised July 2009

This form is available from the Arizona Department of Mines and Mineral Resources and may be reproduced.

ENTERED INTO COMPUTER

8/31/12 AT

SUPPLEMENTAL ATTACHMENT

May be used with the following forms for listing additional mining claims:  
Check One.

- ☐ Affidavit of Performance of Annual Work  
☒ Maintenance Fee Payment  
☐ Notice of Intent to Hold Mining Claims  
☐ Notice of Non-Liability for Labor and Materials Furnished

RECEIVED  
BLM AZ STATE OFFICE  
2012 AUG 20 A 10:41  
PHOENIX, ARIZONA  
BLM  
Date  
Stamp

LINE NO.	AMC NUMBER	CLAIM/SITE NAME	COUNTY RECORDER DATA (If available)	TWP	RNG	SEC
11	413520	AJA - 11	2012002 185	30N	17W	28
12	413521	AJA - 12	2012002 186	30N	17W	28
13	413769	AJA - 13	2012004 595	30N	17W	28
14	414246	AJA - 14	2012009 383	30N	17W	28
15	414247	AJA - 15	2012009 384	30N	17W	28
16	414248	AJA - 16	2012009 385	30N	17W	28
17	414249	AJA - 17	2012009 386	30N	17W	28
18	414552	AJA - 18	2012013 857	30N	17W	28
19	414553	AJA - 19	2012013 858	30N	17W	33
20	414554	AJA - 20	2012013 859	30N	17W	33
21	414555	AJA - 21	2012013 860	30N	17W	33
22	414556	AJA - 22	2012013 861	30N	17W	33
23	414557	AJA - 23	2012013 862	30N	17W	33
24	414558	AJA - 24	2012013 863	30N	17W	33
25	414559	AJA - 25	2012013 864	30N	17W	33
26	414560	AJA - 26	2012013 865	30N	17W	33
27	414561	AJA - 27	2012013 866	30N	17W	33
28	414562	AJA - 28	2012013 867	30N	17W	33
29	414563	AJA - 29	2012013 868	30N	17W	33

Form MCF114  
Revised June 2005



# SUPPLEMENTAL ATTACHMENT

May be used with the following forms for listing additional mining claims:

Check One.

- ☐ Affidavit of Performance of Annual Work
- ☒ Maintenance Fee Payment
- ☐ Notice of Intent to Hold Mining Claims
- ☐ Notice of Non-Liability for Labor and Materials Furnished

BLM  
Date  
Stamp

PHOENIX, ARIZONA

2012 AUG 20 A 10:11

RECEIVED  
BLM AZ STATE OFFICE

LINE NO.	AMC NUMBER	CLAIM/SITE NAME	COUNTY RECORDER DATA (If available)	TWP	RNG	SEC
30	414564	AJA - 30	2012013869	30N	17W	34
31	414565	AJA - 31	2012013870	30N	17W	34
32	414566	AJA - 32	2012013871	30N	17W	33
33	414567	AJA - 33	2012013872	30N	17W	28
34	415013	TUT - 1	2012017517	29N	17W	4
35	415014	TUT - 2	2012017518	29N	17W	4
36	415015	TUT - 3	2012017519	29N	17W	4
37	415016	TUT - 4	2012017520	29N	17W	4
38	415017	TUT - 5	2012017521	29N	17W	4
39	415018	TUT - 6	2012017522	29N	17W	4
40	415019	TUT - 7	2012017523	29N	17W	4
41	415020	TUT - 8	2012017524	29N	17W	4
42	415597	TUT - 9	2012020876	29N	17W	4
43	415598	TUT - 10	2012020877	29N	17W	4
44	415599	TUT - 11	2012020878	29N	17W	4
45	415600	TUT - 12	2012020879	29N	17W	4
46	415601	TUT - 13	2012020880	29N	17W	9
47	415602	TUT - 14	2012020881	29N	17W	9
48	415603	TUT - 15	2012020882	29N	17W	9

ENTERED INTO COMPUTER

Form MCF114  
Revised June 2005

This form is available from the Arizona Department of Mines & Mineral Resources and may be reproduced.

# SUPPLEMENTAL ATTACHMENT

May be used with the following forms for listing additional mining claims:

Check One.

- ☐ Affidavit of Performance of Annual Work
- ☒ Maintenance Fee Payment
- ☐ Notice of Intent to Hold Mining Claims
- ☐ Notice of Non-Liability for Labor and Materials Furnished

RECEIVED BLM AZ STATE OFFICE 2012 AUG 20 A 10:41 PHOENIX, ARIZONA	BLM Date Stamp
--	----------------------

LINE NO.	AMC NUMBER	CLAIM/SITE NAME	COUNTY RECORDER DATA (If available)	TWP	RNG	SEC
49	415604	TUT-16	2012020883	29N	17W	9
50	416173	TUT-17	2012027292	29N	17W	4
51	416174	TUT-18	2012027293	29N	17W	4
52	416175	TUT-19	2012027294	29N	17W	4
53	416176	TUT-20	2012027295	29N	17W	4
54	416177	TUT-21	2012027296	29N	17W	4
55	416178	TUT-22	2012027297	29N	17W	4
56	416179	TUT-23	2012027298	29N	17W	4
57	416180	TUT-24	2012027299	29N	17W	4
58	416181	TUT-25	2012027300	30N	18W	33
59	416182	TUT-26	2012027301	30N	18W	33
60	416183	TUT-27	2012027302	30N	18W	33
61	416184	TUT-28	2012027303	30N	18W	33
62	416646	TUT-29	2012035096	29N	17W	9
63	416647	TUT-30	2012035097	29N	17W	9
64	416648	TUT-31	2012035098	29N	17W	17
65	416649	TUT-32	2012035099	29N	17W	16
66	416650	TUT-33	2012035100	29N	17W	17
67	416651	TUT-34	2012035101	29N	17W	16

Form MCF114  
Revised June 2005

This form is available from the Arizona Department of Mines & Mineral Resources and may be reproduced.

# SUPPLEMENTAL ATTACHMENT

May be used with the following forms for listing additional mining claims:

Check One.

- ☐ Affidavit of Performance of Annual Work  
☒ Maintenance Fee Payment  
☐ Notice of Intent to Hold Mining Claims  
☐ Notice of Non-Liability for Labor and Materials Furnished

BLM  
Date  
Stamp

RECEIVED  
BLM AZ STATE OFFICE  
2012 AUG 20 A 10 41  
PHOENIX, ARIZONA

LINE NO.	AMC NUMBER	CLAIM/SITE NAME	COUNTY RECORDER DATA (If available)	TWP	RNG	SEC
68	416652	TUT-35	2012035102	29N	17W	17
69	416653	TUT-36	2012035103	29N	17W	16
70	416654	TUT-37	2012035104	29N	17W	17
71	416655	TUT-38	2012035105	29N	17W	16
72	416656	TUT-39	2012035106	29N	17W	17
73	416657	TUT-40	2012035107	29N	17W	16
74	416658	TUT-41	2012035108	29N	17W	17
75	416659	TUT-42	2012035109	29N	17W	16
76	416660	TUT-43	2012035110	29N	17W	17
77	416661	TUT-44	2012035111	29N	17W	16
78	416662	TUT-45	2012035112	29N	17W	17
79	416663	TUT-46	2012035113	29N	17W	16
80	416664	TUT-47	2012035114	29N	17W	16
81	416665	TUT-48	2012035115	29N	17W	16
82	416666	TUT-49	2012035116	29N	17W	16
83	416667	TUT-50	2012035117	29N	17W	16
84	416668	TUT-51	2012035118	29N	17W	16
85	416669	TUT-52	2012035119	29N	17W	16
86	416670	TUT-53	2012035120	29N	17W	16

ENTERED INTO COMPUTER

Form MCF114  
Revised June 2005

This form is available from the Arizona Department of Mines & Mineral Resources and may be reproduced.



# SUPPLEMENTAL ATTACHMENT

May be used with the following forms for listing additional mining claims:

Check One.

- ☐ Affidavit of Performance of Annual Work
- ☒ Maintenance Fee Payment
- ☐ Notice of Intent to Hold Mining Claims
- ☐ Notice of Non-Liability for Labor and Materials Furnished

BLM  
Date  
Stamp

RECEIVED  
PHOENIX, ARIZONA  
2012 AUG 20 A 10:41  
BLM STATE OFFICE

LINE NO.	AMC NUMBER	CLAIM/SITE NAME	COUNTY RECORDER DATA (If available)	TWP	RNG	SEC
87	416671	TUT - 54	2012035121	29N	17W	16
88	416672	TUT - 55	2012035122	29N	17W	17
89	416673	TUT - 56	2012035123	29N	17W	17
90	416674	TUT - 57	2012035124	29N	17W	17
91	416675	TUT - 58	2012035125	29N	17W	17
92	416676	TUT - 59	2012035126	29N	17W	17
93	416677	TUT - 60	2012035127	29N	17W	17
94	416678	TUT - 61	2012035128	29N	17W	17
95	416679	TUT - 62	2012035129	29N	17W	17
96	416680	TUT - 63	2012035130	29N	17W	17
97	416681	TUT - 64	2012035131	29N	17W	17
98	416682	TUT - 65	2012035132	29N	17W	17
99	416683	TUT - 66	2012035133	29N	17W	17
100	416684	TUT - 67	2012035134	29N	17W	17
101	416685	TUT - 68	2012035135	29N	17W	17
102	416686	TUT - 69	2012035136	29N	17W	17
103	416687	TUT - 70	2012035137	29N	17W	17

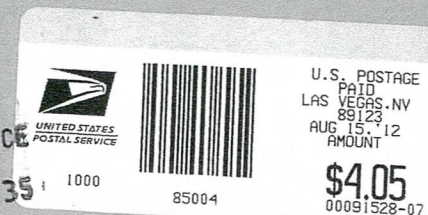
Form MCF114  
Revised June 2005

This form is available from the Arizona Department of Mines & Mineral Resources and may be reproduced.

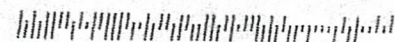
AJA Mining LLC  
10923 Vallerosa St.  
Las Vegas, NV 89141



RECEIVED  
BLM AZ STATE OFFICE  
2012 AUG 20 A 10:35  
PHOENIX, ARIZONA



Bureau of Land Management  
One North Central Ave.  
Suite 800  
Phoenix, AZ 85004-4427





United States Department of the Interior  
 Bureau of Land Management  
 LANDS/RECREATION & PLANNING  
 ONE N CENTRAL AVE  
 PHOENIX, AZ 85004 -2203  
 Phone: 602-417-9200

Receipt

No:

2635573

Transaction #: 2716152

Date of Transaction: 08/21/2012

**ENTERED INTO COMPUTER**

CUSTOMER:

AJA MINING LLC  
 10923 VALLEROSA ST  
 LAS VEGAS, NV 89141-3927 US

LINE #	QTY	DESCRIPTION	REMARKS	UNIT PRICE	TOTAL
1	1.00	LOCATABLE MINERALS / MINING CLAIMS-NOT NEW-UNADJUD, ONE AUTH NO. ONLY / MINING CLAIM MONEY RECEIVED CASES: AMC413510/\$14420.00	MAINT FEE PYMNT (103) 2013	- n/a -	14420.00
<b>TOTAL:</b>					<b>\$14,420.00</b>

## PAYMENT INFORMATION

1	AMOUNT:	14420.00	POSTMARKED:	N/A
	TYPE:	CHECK	RECEIVED:	08/20/2012
	CHECK NO:	1070		
	NAME:	AJA MINING LLC 10923 VALLEROSA ST LAS VEGAS NV 89141-3927 US		

## REMARKS

This receipt was generated by the automated BLM Collections and Billing System and is a paper representation of a portion of the official electronic record contained therein. Lead AMC #5 (PB)

AMC 413510

413769

414246

414552

415013

415597

416173

416646



**NOTICE!!**

**These documents have been scanned!**

**Do not place un-scanned documents beneath this notice!**

**Do not remove this notice from this file!**

GPO Jacket No. 560-102  
Print Order 61540  
Rise Business Services, LLC  
Job=AZ15 5/14/2019

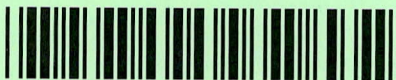


Box Number= AZ15048



Claim Begin-End: AMC415013-AMC415020

6 Location Notices-Amendments and Supporting Documents



AZ15048-6

AMC414884-AMC415438

# Mining Claim Status Report

DATA  
ENTERED

APR 18 2012 PB

MTP Checked by APR 18 2012 PB

GEO Checked by APR 18 2012 PB

LEAD SERIAL NUMBER

AMC

415013

thru

AMC

415020

## # OF CLAIMS & TYPE

# 8 LODE  
# PLACER  
# ASSOCIATION PLACER  
# MILL SITE  
# TUNNEL SITE

## CHARGES

Location Fee @ \$34 = \$ 272.00  
Processing Fee @ \$15 = \$ 120.00  
Maintenance Fee @ \$140 = \$ 1120.00  
Overage ( + ) \$  
Shortage ( - ) \$  
Other Fees \$  
TOTAL \$ 1512.00

## ARE THERE ENOUGH LOCATORS?

Yes [X] No [ ]

## DOCUMENTS RECEIVED VIA -

Over-the-Counter [ ] Mail [X]

## TIMELY FILED?

Yes [X] No [ ]

## LEGAL DESCRIPTION -

T 29N R 17W SEC 4,9  
T R SEC  
T R SEC  
T R SEC

BLM [ ] FOREST SERVICE [ ] SUBJ TO PL 359: Yes [ ] No [ ]

WILDERNESS AREA: No [ ] Yes [ ]

SPLIT ESTATE - N/A [ ] SX [ ] PX [ ] SRHA [ ] OTHER [ ]

Proper Notice Filed if Located on SHRA Lands? N/A [ ] Yes [ ] No [ ]

## RECONVEYED MINERALS ON BLM LANDS REQUIRE OPENING ORDERS FROM 1944 TO 1993 -

Open to Entry on: N/A [ ]

COMMENTS/STATUS - VOID [ ] PARTIALLY VOID [ ] PVT MINERALS [ ] WITHDRAWN LANDS [ ]

OTHER [ ]

Claimant acknowledges that portions of the following claims(s) site(s) may be void or voidable.

Printed Name of Claimant Signature of Claimant

\*\*\*\*\* FINAL ADJUDICATION \*\*\*\*\*

DATE 6-29-12 INITIALS RS

AMC415013

**FEE# 2012017517**

OFFICIAL RECORDS  
OF MOHAVE COUNTY  
CAROL MEIER,  
COUNTY RECORDER



04/06/2012 11:29 AM Fee: \$10.00

PAGE: 1 of 2

**LOCATION NOTICE FOR LOPE MINING CLAIM**

NOTICE IS HEREBY GIVEN that the TUT - 1

\_\_\_\_\_ lode mining claim has been located

by AJA Mining LLC whose current mailing

address is 10923 Vallerosa Street

LAS VEGAS, NV 89141

BLM  
Date  
Stamp

2012 APR 10 PM 2:46  
PHOTOGRAPHED

RECEIVED  
BLM AZ STATE OFFICE

The general course of this claim is North - South and it is situated in MOHAVE

County, Arizona. This claim is 1500 feet in length and 600 feet in width. This claim runs

from the location monument on which this location notice is posted approximately 20 feet in a

South direction to the South end line and 1480 feet in a North direction to the

North end line. This claim is marked by six monuments, one at each corner and one at the center of each end line of the claim.

The location monument on which this notice is posted is situated within Section 4, Township 29

N, Range 17 W, Gila Salt River Base and Meridian, Arizona and this claim encompasses portions

of the following quarter section (s), section (s), Township (s) and Range (s) SW 1/4 SEC 4,

T 29 N, R 17 W

Gila Salt River Base and Meridian, Arizona.

The locality of this claim with reference to some natural object or permanent monument and additional information

(if any) concerning its locality are as follows: WEST OF KING TUT MINE

DATED AND POSTED on the ground this 5<sup>th</sup> day of APRIL, 20 12.

LOCATOR (s) KEITH JAY Keith Jay

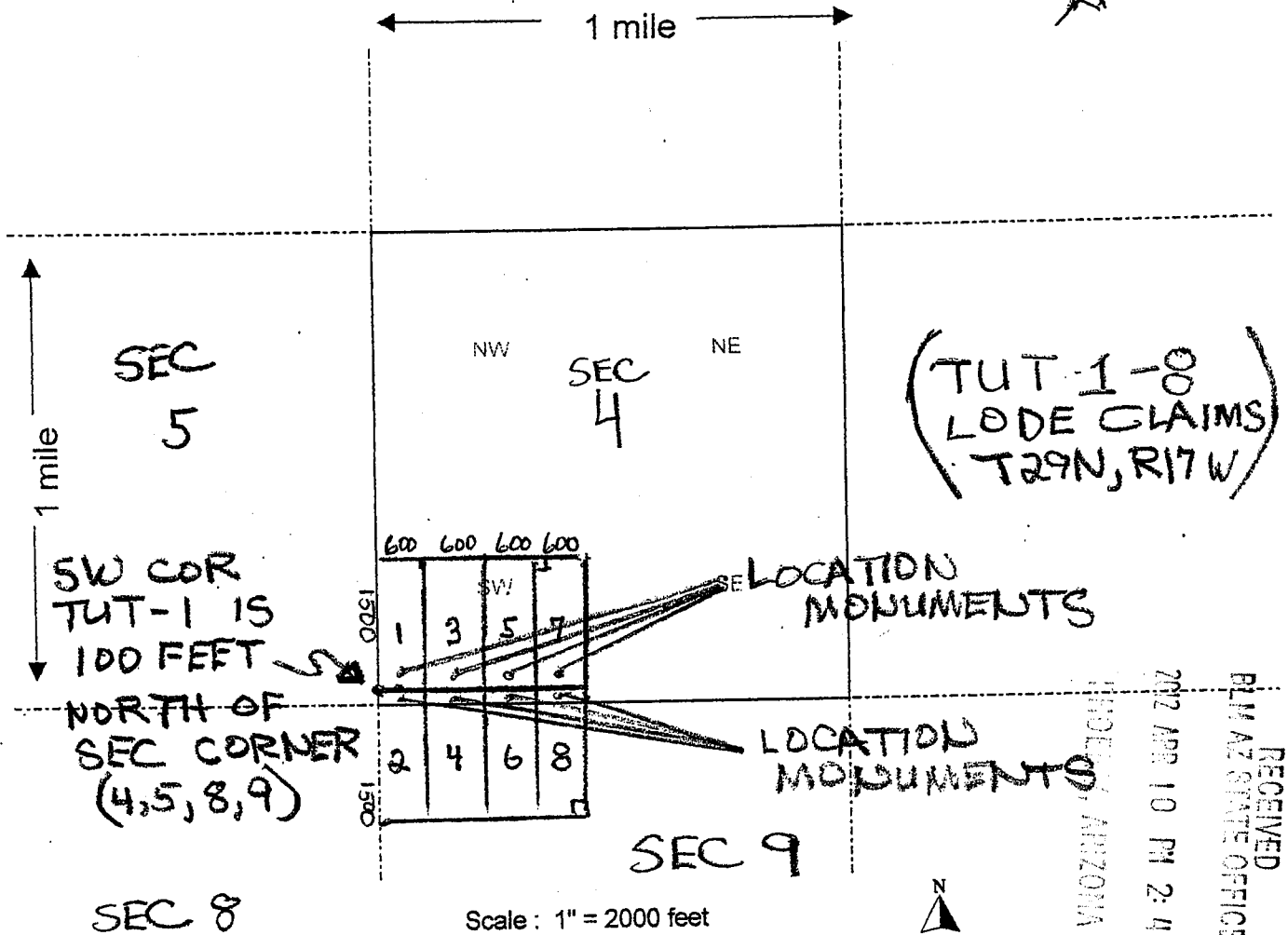
Form MCF100  
Revised July 2005

ANCH 15013



# MINING CLAIM MAP

Lode ☒ Placer ( )



- The above map depicts the TUT-1 mining claim, which is located in Section (s) 4, Township 29 N, Range 17 W, Gila and Salt River Base and Meridian, MOHAVE County, Arizona.
- The type of corner and location monuments used are as follows: 2" x 2" WOODEN POSTS 4 FEET HIGH
- The bearings and distances in degrees and feet between claim corners are as depicted on the map.

Form MCF100a  
Revised July 2005

This form is available from the Arizona Department of Mines & Mineral Resources and may be reproduced.

AMC415013

FEE# 2012017518

OFFICIAL RECORDS  
OF MOHAVE COUNTY  
CAROL MEIER,  
COUNTY RECORDER



04/06/2012 11:29 AM Fee: \$10.00

PAGE: 1 of 2

LOCATION NOTICE FOR LODE MINING CLAIM

NOTICE IS HEREBY GIVEN that the TUT - 2

lode mining claim has been located

by AJA MINING LLC whose current mailing  
address is 10923 VALLEROSA STREET  
LAS VEGAS, NV 89141

The general course of this claim is NORTH-SOUTH and it is situated in MOHAVE  
County, Arizona. This claim is 1500 feet in length and 600 feet in width. This claim runs  
from the location monument on which this location notice is posted approximately 20 feet in a  
NORTH direction to the NORTH end line and 1480 feet in a SOUTH direction to the  
SOUTH end line. This claim is marked by six monuments, one at each corner and one at the center of each  
end line of the claim.

The location monument on which this notice is posted is situated within Section 4, Township 29  
N, Range 17 W, Gila Salt River Base and Meridian, Arizona and this claim encompasses portions  
of the following quarter section (s), section (s), Township (s) and Range (s) SW 1/4 SEC 4,  
NW 1/4 SEC 9, T 29 N, R 17 W

Gila Salt River Base and Meridian, Arizona.

The locality of this claim with reference to some natural object or permanent monument and additional information  
(if any) concerning its locality are as follows: WEST OF King TUT MINE

DATED AND POSTED on the ground this 5<sup>th</sup> day of APRIL, 2012.

LOCATOR (s) KEITH JAY Keith Jay

Form MCF100  
Revised July 2005

RECEIVED  
BLM AZ STATE OFFICE

AMC415014

Lode ~~1~~ Placer ( )

1 mile

SEC  
5

NW

NE

SEC  
4

(TUT-1-8  
LODE CLAIMS  
T29N, R17W)

SW COR  
TUT-1 IS  
100 FEET  
NORTH OF  
SEC CORNER  
(4,5,8,9)

# LOCATION MONUMENTS

# LOCATION MONUMENTS

SEC 9

SEC 8

Scale : 1" = 2000 feet

1. The above map depicts the TUT-2 mining claim, which is located in Section 8,  
4+9, Township 29 N, Range 17 W, Gila and Salt River Base and Meridian,  
MOHAVE County, Arizona.

2. The type of corner and location monuments used are as follows: 2" x 2" WOODEN POSTS 4 FEET HIGH

3. The bearings and distances in degrees and feet between claim corners are as depicted on the map.

**Form MCF100a**  
**Revised July 2005**

This form is available from the **Arizona Department of Mines & Mineral Resources** and may be reproduced.

RECEIVED  
BLMAZ STATE OFFICE

ANCI 15014



FEES# 2012017519

OFFICIAL RECORDS  
OF MOHAVE COUNTY  
CAROL MEIER,  
COUNTY RECORDER



04/06/2012 11:29 AM Fee: \$10.00

PAGE: 1 of 2

LOCATION NOTICE FOR LODE MINING CLAIM

NOTICE IS HEREBY GIVEN that the TUT - 3  
\_\_\_\_\_ lode mining claim has been located  
by AJA MINING LLC whose current mailing  
address is 10923 Vallerosa Street  
LAS VEGAS, NV 89141

BLM  
Date  
Stamp

2012 APR 10 PM 2:46  
MOHAVE, ARIZONA

RECEIVED  
BLM AZ STATE OFFICE

The general course of this claim is NORTH-South and it is situated in MOHAVE  
County, Arizona. This claim is 1500 feet in length and 600 feet in width. This claim runs  
from the location monument on which this location notice is posted approximately 20 feet in a  
South direction to the South end line and 1480 feet in a NORTH direction to the  
NORTH end line. This claim is marked by six monuments, one at each corner and one at the center of each  
end line of the claim.

The location monument on which this notice is posted is situated within Section 4, Township 29  
N, Range 17 W, Gila Salt River Base and Meridian, Arizona and this claim encompasses portions  
of the following quarter section (s), section (s), Township (s) and Range (s) SW 1/4 SEC 4,  
T 29 N, R 17 W

Gila Salt River Base and Meridian, Arizona.

The locality of this claim with reference to some natural object or permanent monument and additional information  
(if any) concerning its locality are as follows: WEST OF KING TUT MINE

DATED AND POSTED on the ground this 5<sup>th</sup> day of APRIL, 20 12.

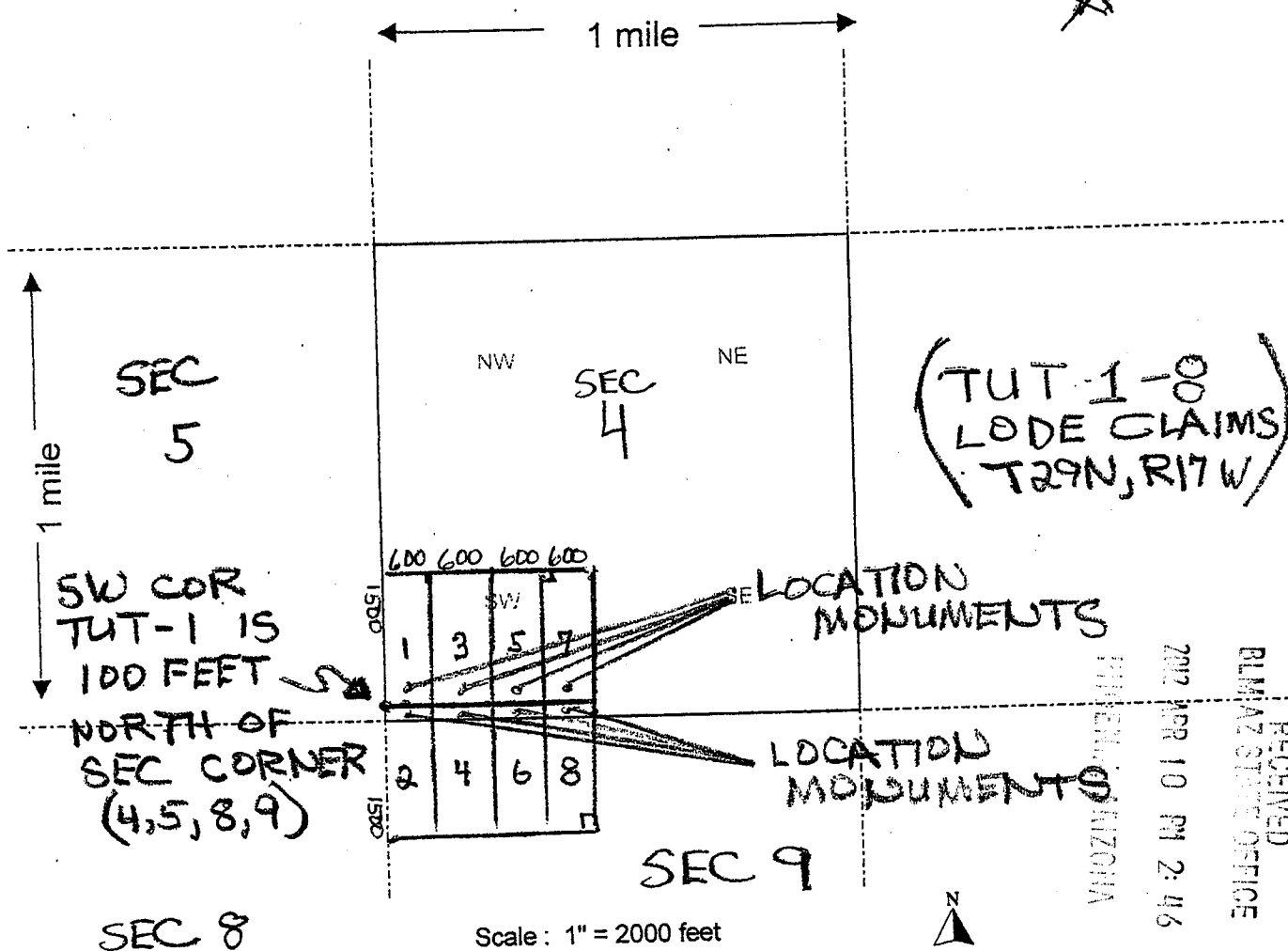
LOCATOR (s) Keith Jay Keith Jay

Form MCF100  
Revised July 2005

AMC415015

# MINING CLAIM MAP

Lode ☒ Placer ( )



- The above map depicts the TUT-3 mining claim, which is located in Section (s) 4, Township 29 N, Range 17 W, Gila and Salt River Base and Meridian, MOHAVE County, Arizona.
- The type of corner and location monuments used are as follows: 2" x 2" WOODEN POSTS 4 FEET HIGH
- The bearings and distances in degrees and feet between claim corners are as depicted on the map.

Form MCF100a  
Revised July 2005

This form is available from the Arizona Department of Mines & Mineral Resources and may be reproduced.

ANCH 15015

FEE# 2012017520

OFFICIAL RECORDS  
OF MOHAVE COUNTY  
CAROL MEIER,  
COUNTY RECORDER



04/06/2012 11:29 AM Fee: \$10.00

PAGE: 1 of 2

RECEIVED  
BLM AZ STATE OFFICE

LOCATION NOTICE FOR LODE MINING CLAIM

NOTICE IS HEREBY GIVEN that the TUT-4

\_\_\_\_\_ lode mining claim has been located

by ATA MINING LLC whose current mailing  
address is 10923 VALLE ROSA STREET  
LAS VEGAS, NV 89141

BLM  
Date  
Stamp

PHOENIX, ARIZONA  
2012 APR 10 PM 2:46

The general course of this claim is NORTH-SOUTH and it is situated in MOHAVE  
County, Arizona. This claim is 1500 feet in length and 600 feet in width. This claim runs

from the location monument on which this location notice is posted approximately 20 feet in a  
NORTH direction to the NORTH end line and 1480 feet in a SOUTH direction to the

SOUTH end line. This claim is marked by six monuments, one at each corner and one at the center of each  
end line of the claim.

The location monument on which this notice is posted is situated within Section 4, Township 29  
N, Range 17 W, Gila Salt River Base and Meridian, Arizona and this claim encompasses portions  
of the following quarter section (s), section (s), Township (s) and Range (s) SW 1/4 SEC 4,  
NW 1/4 SEC 9, T29N, R17W

Gila Salt River Base and Meridian, Arizona.

The locality of this claim with reference to some natural object or permanent monument and additional information  
(if any) concerning its locality are as follows: WEST OF KING TUT

MINE

DATED AND POSTED on the ground this 5th day of APRIL, 20 12.

LOCATOR (s) Keith Jay KEITH JAY

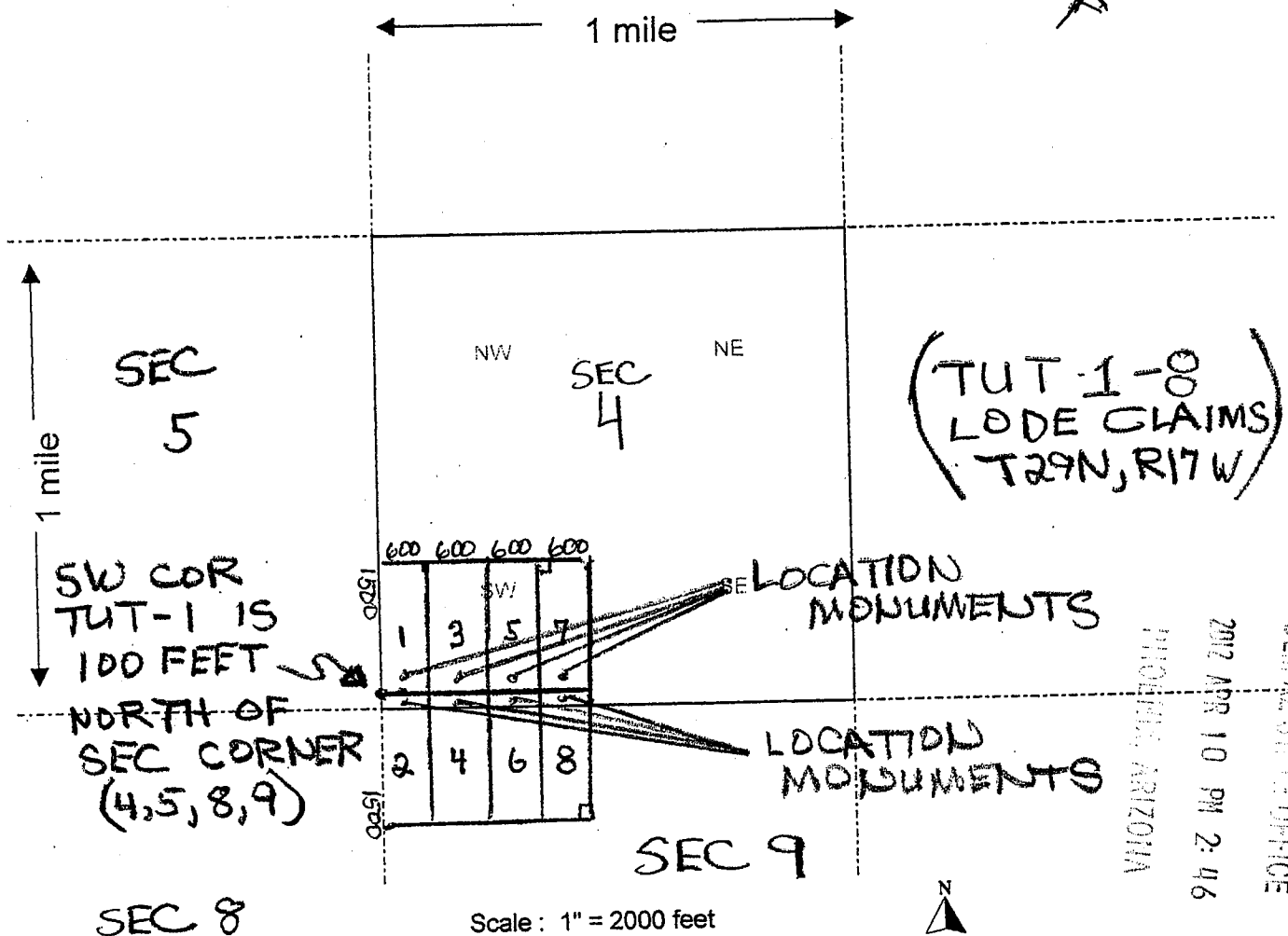
Form MCF100  
Revised July 2005

AMC415016



# MINING CLAIM MAP

Lode ☒ Placer ( )



- The above map depicts the TUT-4 mining claim, which is located in Section (s) 4+9, Township 29 N, Range 17 W, Gila and Salt River Base and Meridian, MOHAVE County, Arizona.
- The type of corner and location monuments used are as follows: 2" x 2" WOODEN POSTS 4 FEET HIGH
- The bearings and distances in degrees and feet between claim corners are as depicted on the map.

Form MCF100a  
Revised July 2005

This form is available from the Arizona Department of Mines & Mineral Resources and may be reproduced.

AMC415016

FEE# 2012017521

OFFICIAL RECORDS  
OF MOHAVE COUNTY  
CAROL MEIER,  
COUNTY RECORDER



04/06/2012 11:29 AM Fee: \$10.00

PAGE: 1 of 2

LOCATION NOTICE FOR LODE MINING CLAIM

NOTICE IS HEREBY GIVEN that the TUT-5

\_\_\_\_\_ lode mining claim has been located

by AJA MINING LLC whose current mailing  
address is 10923 VALLEROSA STREET  
LAS VEGAS, NV 89141

BLM  
Date  
Stamp

MOHAVE COUNTY, ARIZONA

2012 APR 10 PM 2:46

RECEIVED  
BLM AZ STATE OFFICE

The general course of this claim is NORTH-SOUTH and it is situated in MOHAVE  
County, Arizona. This claim is 1500 feet in length and 600 feet in width. This claim runs  
from the location monument on which this location notice is posted approximately 20 feet in a  
SOUTH direction to the SOUTH end line and 1480 feet in a NORTH direction to the  
NORTH end line. This claim is marked by six monuments, one at each corner and one at the center of each  
end line of the claim.

The location monument on which this notice is posted is situated within Section 4, Township 29  
N, Range 17 W, Gila Salt River Base and Meridian, Arizona and this claim encompasses portions  
of the following quarter section (s), section (s), Township (s) and Range (s) SW 1/4 SEC 4  
T 29 N, R 17 W

Gila Salt River Base and Meridian, Arizona.

The locality of this claim with reference to some natural object or permanent monument and additional information  
(if any) concerning its locality are as follows: WEST OF KING TUT  
MINE

DATED AND POSTED on the ground this 5<sup>th</sup> day of APRIL, 20 12.

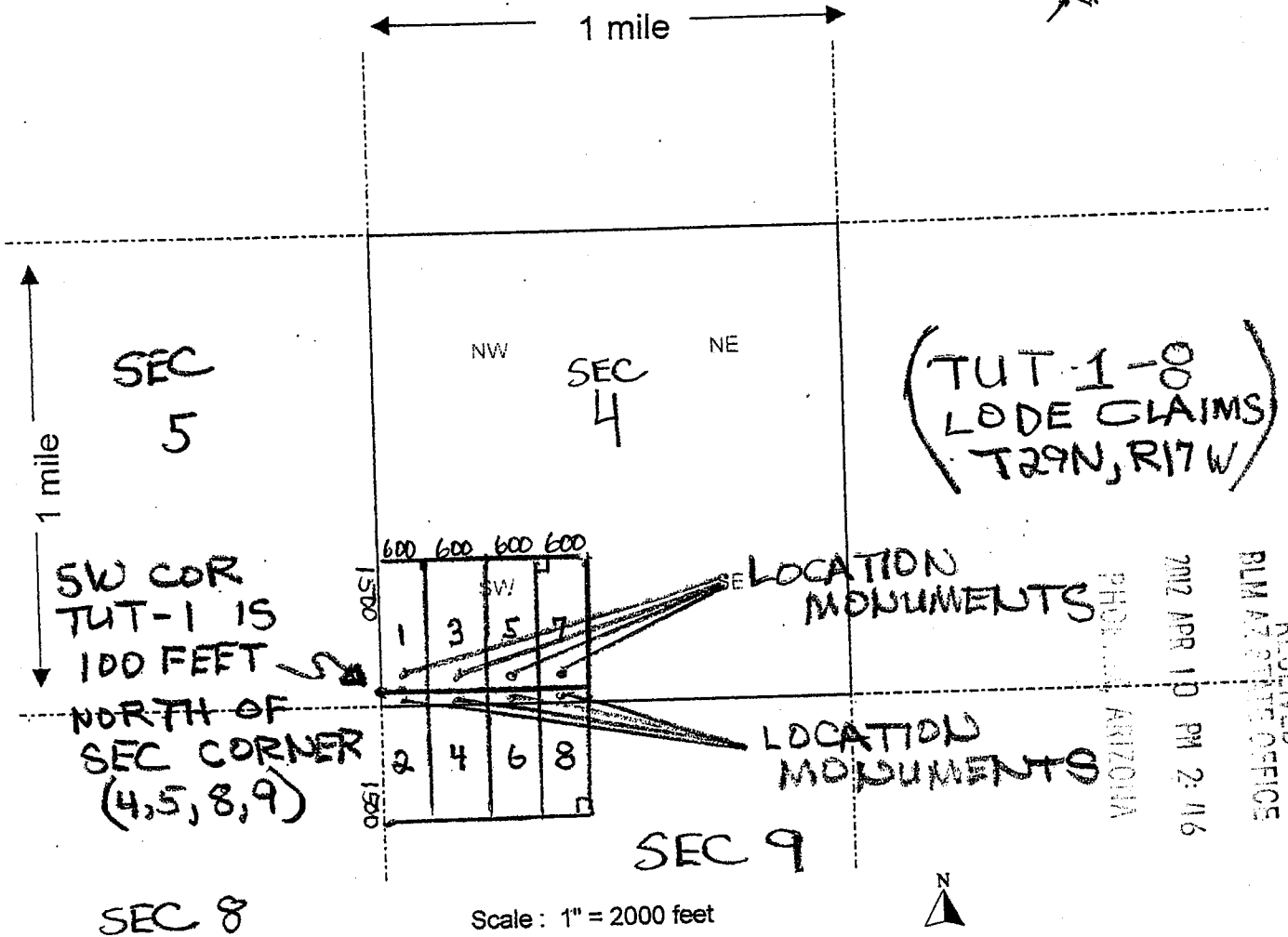
LOCATOR (s) KEITH JAY Keith Jay

Form MCF100  
Revised July 2005

ANC415017

# MINING CLAIM MAP

Lode ☒ Placer ( )

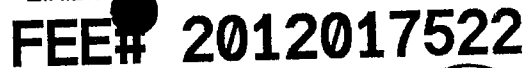


- The above map depicts the TUT-5 mining claim, which is located in Section (s) 4, Township 29 N, Range 17 W, Gila and Salt River Base and Meridian, MOHAVE County, Arizona.
- The type of corner and location monuments used are as follows: 2" x 2" WOODEN POSTS 4 FEET HIGH
- The bearings and distances in degrees and feet between claim corners are as depicted on the map.

Form MCF100a  
Revised July 2005

This form is available from the Arizona Department of Mines & Mineral Resources and may be reproduced.





OFFICIAL RECORDS  
OF MOHAVE COUNTY  
CAROL MEIER,  
COUNTY RECORDER



04/06/2012 11:29 AM Fee: \$10.00

**PAGE: 1 of 2**

**LOCATION NOTICE FOR LODGE MINING CLAIM**

NOTICE IS HEREBY GIVEN that the TUT-6

BLM  
Date  
Stamp

\_\_\_\_\_ lode mining claim has been located

by AJA MINING LLC whose current mailing  
address is 10923 VALLEROSA STREET  
LAS VEGAS, NV 89141

The general course of this claim is NORTH - SOUTH and it is situated in MOHAVE County, Arizona. This claim is 1500 feet in length and 600 feet in width. This claim runs 30 feet in a

County, Arizona. This claim is Section 20  
from the location monument on which this location notice is posted approximately 20 feet in a  
NORTH direction to the NORTH end line and 1480 feet in a SOUTH direction to the  
SOUTH end line. This claim is marked by six monuments, one at each corner and one at the center of each  
end line of the claim.

end line of the claim.

The location monument on which this notice is posted is situated within Section 4, Township 29  
N, Range 17 W, Gila Salt River Base and Meridian, Arizona and this claim encompasses portions  
of the following quarter section (s), section (s), Township (s) and Range (s) SW 1/4 SEC 4,  
NW 1/4 SEC 9, T29N, R17W

Gila Salt River Base and Meridian, Arizona.

The locality of this claim with reference to some natural object or permanent monument and additional information (if any) concerning its locality are as follows: WEST OF KING TUT

MINE

DATED AND POSTED on the ground this 5<sup>th</sup> day of APRIL, 20 12

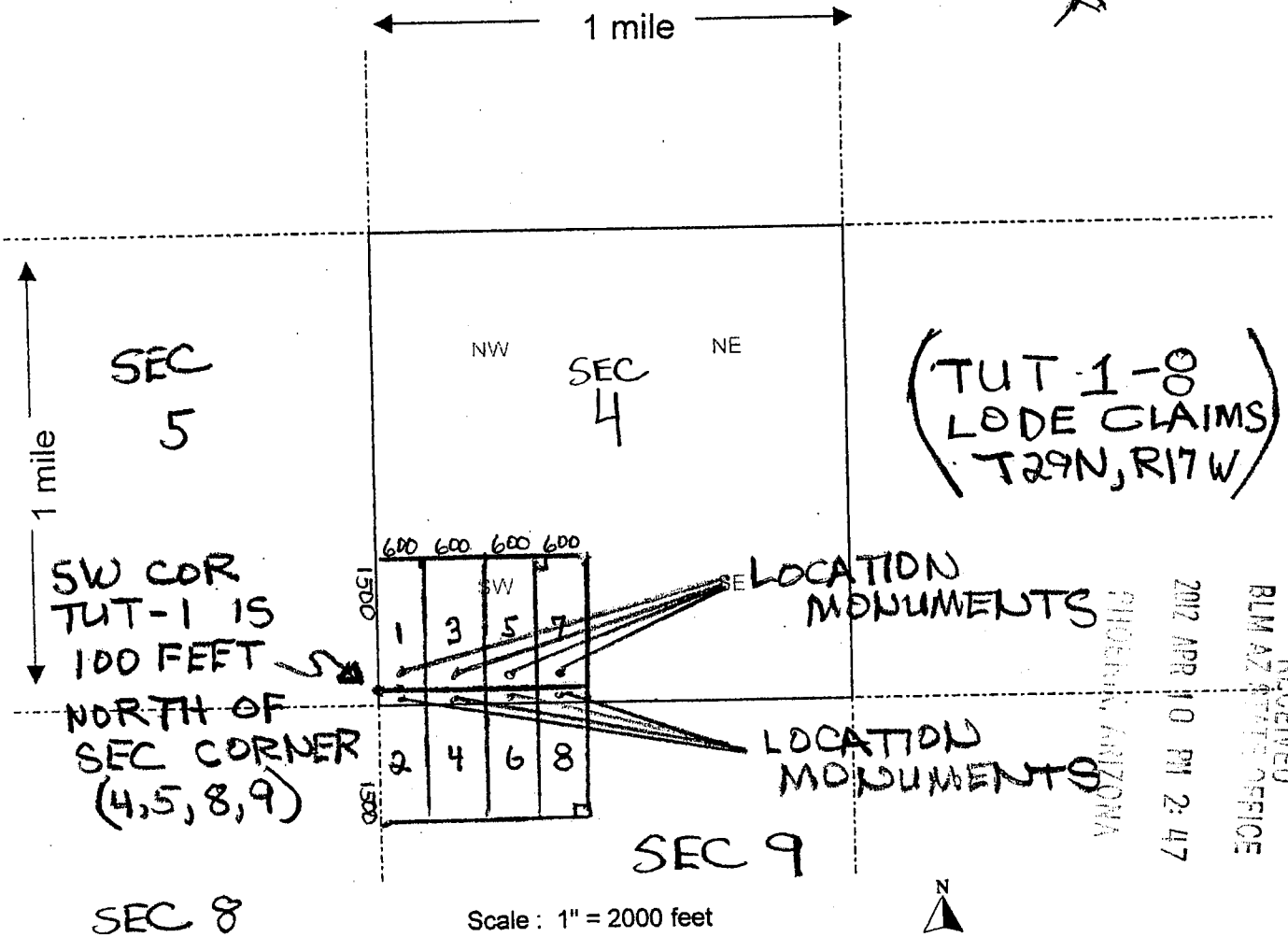
LOCATOR (s) Keith Jay KEITH JAY

**Form MCF100**  
**Revised July 2005**

This form is available from the Arizona Department of Mines & Mineral Resources and may be reproduced.

# MINING CLAIM MAP

Lode ☒ Placer ( )



- The above map depicts the TUT-6 mining claim, which is located in Section (s) 4+9, Township 29 N, Range 17 W, Gila and Salt River Base and Meridian, MOHAVE County, Arizona.
- The type of corner and location monuments used are as follows: 2" x 2" WOODEN POSTS 4 FEET HIGH
- The bearings and distances in degrees and feet between claim corners are as depicted on the map.

Form MCF100a  
Revised July 2005

This form is available from the Arizona Department of Mines & Mineral Resources and may be reproduced.

AMC415018

FEE# 2012017523

OFFICIAL RECORDS  
OF MOHAVE COUNTY  
CAROL MEIER,  
COUNTY RECORDER

04/06/2012 11:29 AM Fee: \$10.00

PAGE: 1 of 2

RECEIVED  
BLM AZ STATE OFFICE

## LOCATION NOTICE FOR LOPE MINING CLAIM

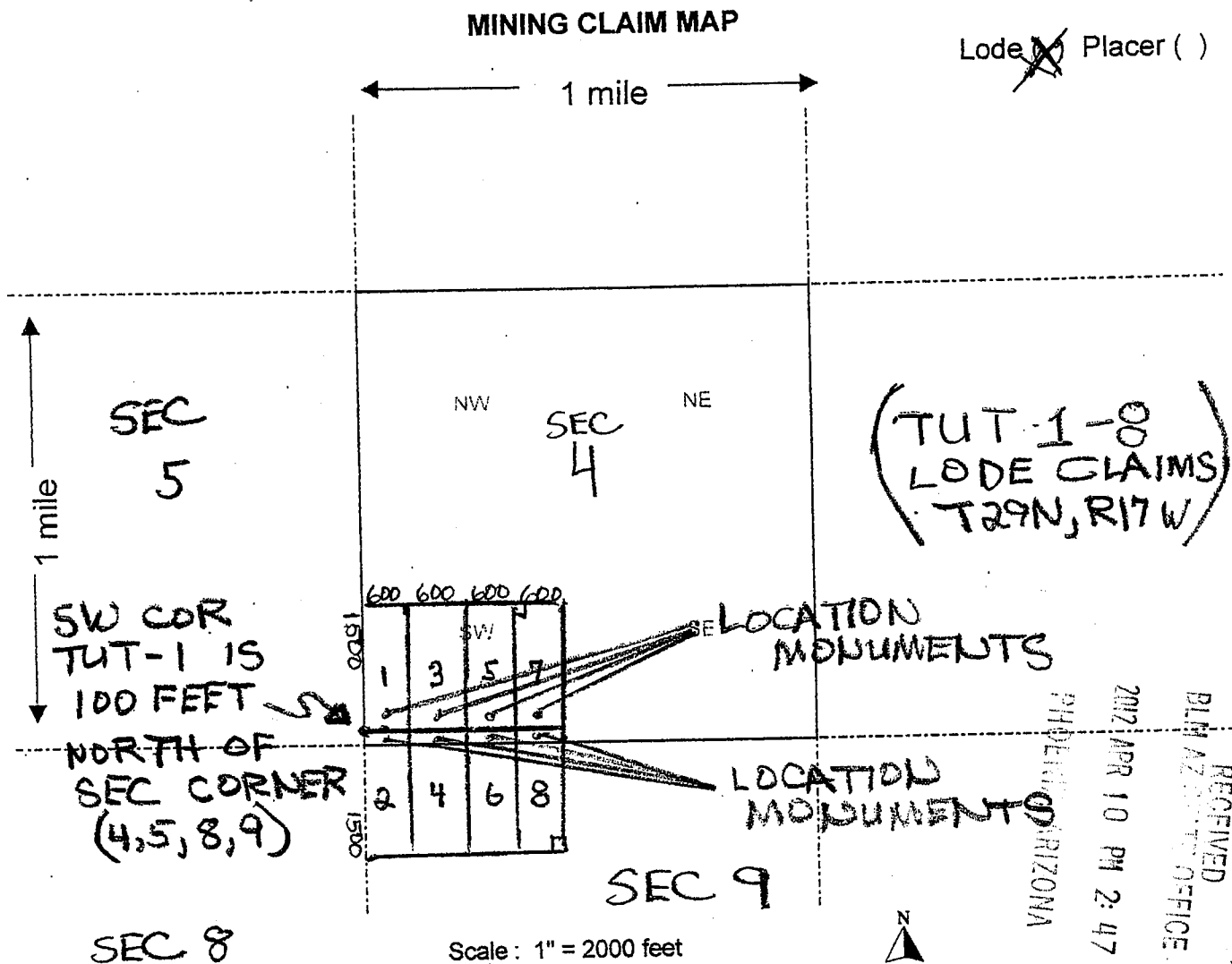
NOTICE IS HEREBY GIVEN that the TUT-7BLM  
Date  
Stamplode mining claim has been located  
by AJA MINING LLC whose current mailing  
address is 10923 VALLEROSA STREET  
LAS VEGAS, NV 89141The general course of this claim is NORTH-SOUTH and it is situated in \_\_\_\_\_  
County, Arizona. This claim is 1500 feet in length and 600 feet in width. This claim runs  
from the location monument on which this location notice is posted approximately 20 feet in a  
SOUTH direction to the SOUTH end line and 1480 feet in a NORTH direction to the  
NORTH end line. This claim is marked by six monuments, one at each corner and one at the center of each  
end line of the claim.The location monument on which this notice is posted is situated within Section 4, Township 29  
N, Range 17 W, Gila Salt River Base and Meridian, Arizona and this claim encompasses portions  
of the following quarter section (s), section (s), Township (s) and Range (s) SW 1/4 SEC 4,  
T 29 N, R 17 W

Gila Salt River Base and Meridian, Arizona.

The locality of this claim with reference to some natural object or permanent monument and additional information  
(if any) concerning its locality are as follows: WEST OF KING TUT MINEDATED AND POSTED on the ground this 5 day of APRIL, 2012.LOCATOR (s) Keith JAY Keith JayForm MCF100  
Revised July 2005

AMC415019





- The above map depicts the TUT-7 mining claim, which is located in Section (s) 4, Township 29 N, Range 17 W, Gila and Salt River Base and Meridian, MOHAVE County, Arizona.
- The type of corner and location monuments used are as follows: 2" x 2" WOODEN POSTS 4 FEET HIGH
- The bearings and distances in degrees and feet between claim corners are as depicted on the map.

Form MCF100a  
Revised July 2005

This form is available from the Arizona Department of Mines & Mineral Resources and may be reproduced.

FEE# 2012017524

OFFICIAL RECORDS  
OF MOHAVE COUNTY  
CAROL MEIER,  
COUNTY RECORDER



04/06/2012 11:29 AM Fee: \$10.00

PAGE: 1 of 2

LOCATION NOTICE FOR LODE MINING CLAIM

NOTICE IS HEREBY GIVEN that the TUT-8

\_\_\_\_\_ lode mining claim has been located

by AJA MINING LLC whose current mailing  
address is 10923 VALEROSA STREET  
LAS VEGAS, NV 89141

BLM  
Date  
Stamp

PHOENIX, ARIZONA

2012 APR 10 PM 2:47

RECEIVED  
BLM AZ OFFICE

The general course of this claim is NORTH-SOUTH and it is situated in MOHAVE  
County, Arizona. This claim is 1500 feet in length and 600 feet in width. This claim runs  
from the location monument on which this location notice is posted approximately 20 feet in a  
NORTH direction to the NORTH end line and 1480 feet in a SOUTH direction to the  
SOUTH end line. This claim is marked by six monuments, one at each corner and one at the center of each  
end line of the claim.

The location monument on which this notice is posted is situated within Section 4, Township 29  
N, Range 17 W, Gila Salt River Base and Meridian, Arizona and this claim encompasses portions  
of the following quarter section (s), section (s), Township (s) and Range (s) SW 1/4 SEC 4,  
NW 1/4 SEC 9, T29N, R17W

Gila Salt River Base and Meridian, Arizona.

The locality of this claim with reference to some natural object or permanent monument and additional information  
(if any) concerning its locality are as follows: WEST OF KING TUT  
MINE

DATED AND POSTED on the ground this 5th day of APRIL, 2012

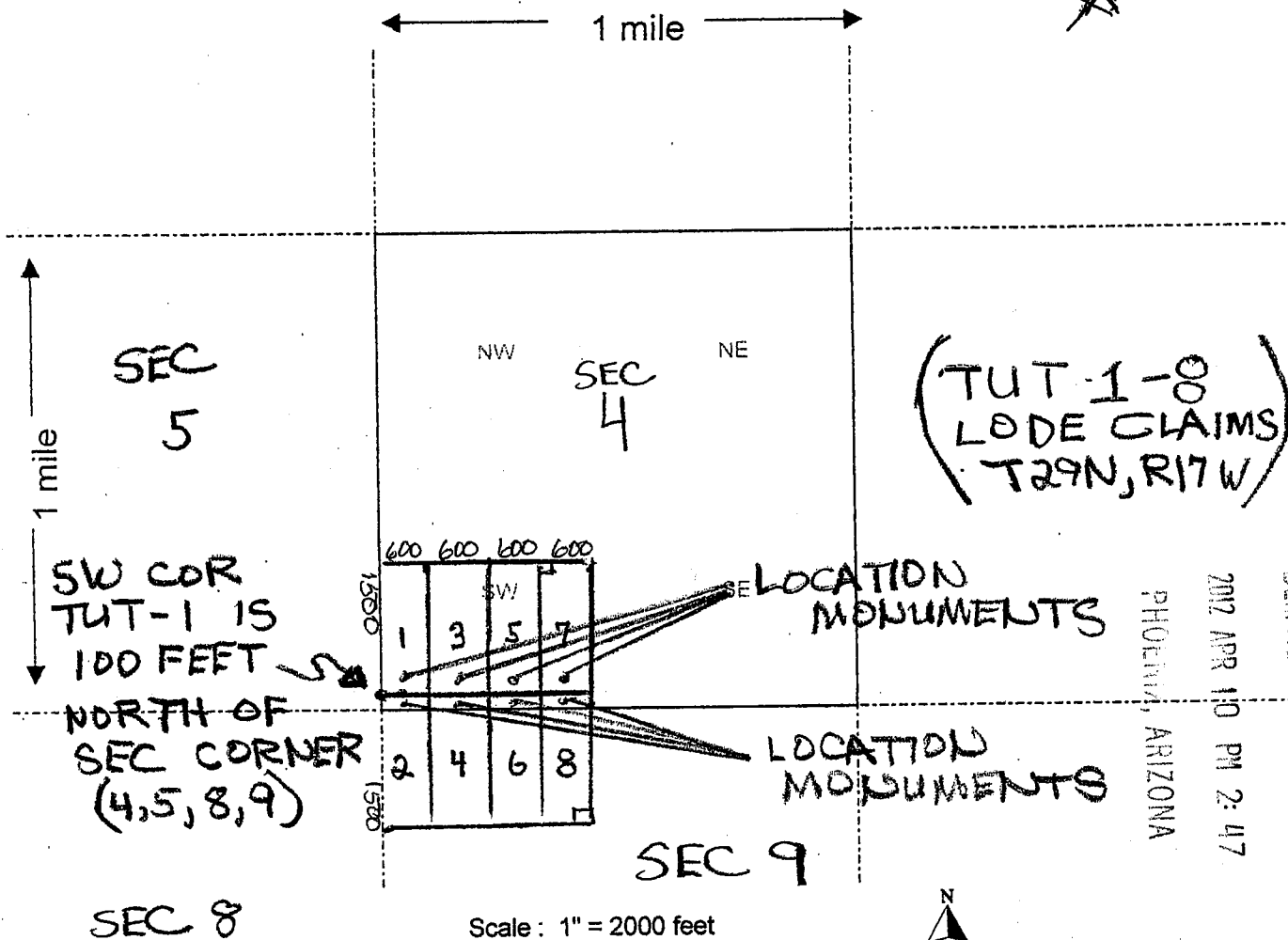
LOCATOR (s) Keith Jay KEITH JAY

Form MCF100  
Revised July 2005

ANC415020

# MINING CLAIM MAP

Lode ~~X~~ Placer ( )



RECEIVED  
BLM AZ STATE OFFICE  
PHOENIX, ARIZONA  
2012 APR 10 PM 2:47

AMC 415020

- The above map depicts the TUT-8 mining claim, which is located in Section (s) 4 & 9, Township 29 N, Range 17 W, Gila and Salt River Base and Meridian, MOHAVE County, Arizona.
- The type of corner and location monuments used are as follows: 2" x 2" WOODEN POSTS 4 FEET HIGH
- The bearings and distances in degrees and feet between claim corners are as depicted on the map.

Form MCF100a  
Revised July 2005

This form is available from the Arizona Department of Mines & Mineral Resources and may be reproduced.



RUN TIME: 08:39 AM

RUN DATE: 04/18/2012

Page 1 of 1

DEPARTMENT OF INTERIOR  
BUREAU OF LAND MANAGEMENT

Input Parameters for Geographic Report with Land

System Id = CR

Admin State = AZ

Geo State = AZ

Casetype Begins With

Case Disp Txt = AUTHORIZED, CANCELLED, EXPIRED, PENDING, REJECTED, RELINQUISHED, WITHDRAWN

Mer Twp Rng =

Section =

Mtrs = 14 0290N 0170W 004, 14 0290N 0170W 009, 14 0290N 0170W 999

Commodity =

Commodity Txt =

Pending Org =

Pend Org Decode =

Total Rows Returned:

2

NO WARRANTY IS MADE BY BLM FOR USE OF THE DATA  
FOR PURPOSES NOT INTENDED BY BLM

RUN TIME: 08:36 AM

Adm State: AZ

UNITED STATES DEPARTMENT OF INTERIOR  
BUREAU OF LAND MANAGEMENT  
GEOGRAPHIC REPORT WITH LAND  
Sorted by Meridian Township Range

RUN DATE: 04/18/2012

Page 1 of 1

Serial Number: AZA 023481

Total Case Acres: 1.000

<u>Casetype</u>	<u>Case Disp</u>				<u>Sect</u>	<u>Sur Typ</u>	<u>Sur Num</u>	<u>Suff</u>	<u>Subdivision</u>	<u>Act Pend</u>
380910	PENDING	14	0290N	0170W	009	ALIQ			W2;	Y

Serial Number: AZA 027150

Total Case Acres: 1.000

<u>Casetype</u>	<u>Case Disp</u>				<u>Sect</u>	<u>Sur Typ</u>	<u>Sur Num</u>	<u>Suff</u>	<u>Subdivision</u>	<u>Act Pend</u>
380913	EXPIRED	14	0290N	0170W	004	FF		1	PART;	
					009	ALIQ			NWNW;	

Serial Number: AZA 030863

Total Case Acres: 5.000

<u>Casetype</u>	<u>Case Disp</u>				<u>Sect</u>	<u>Sur Typ</u>	<u>Sur Num</u>	<u>Suff</u>	<u>Subdivision</u>	<u>Act Pend</u>
380913	PENDING	14	0290N	0170W	004	ALIQ			SWSW;	Y

## MOHAVE COUNTY

[illegible]

FOR ORDERS AFFECTING DISPOSAL OR USE OF  
UNIDENTIFIED LANDS WITHDRAWN FOR CLASSIFICATION,  
MINERALS, WATER AND/OR OTHER PUBLIC PURPOSES,  
REFER TO INDEX OF MISCELLANEOUS DOCUMENTS.

DIST NO 2

GRAZING DIST NO 2

*All Lds within 6 miles of Colorado River W of 114 Mer  
included in Temp Wall Colorado River Survey SO 1/31/1903*

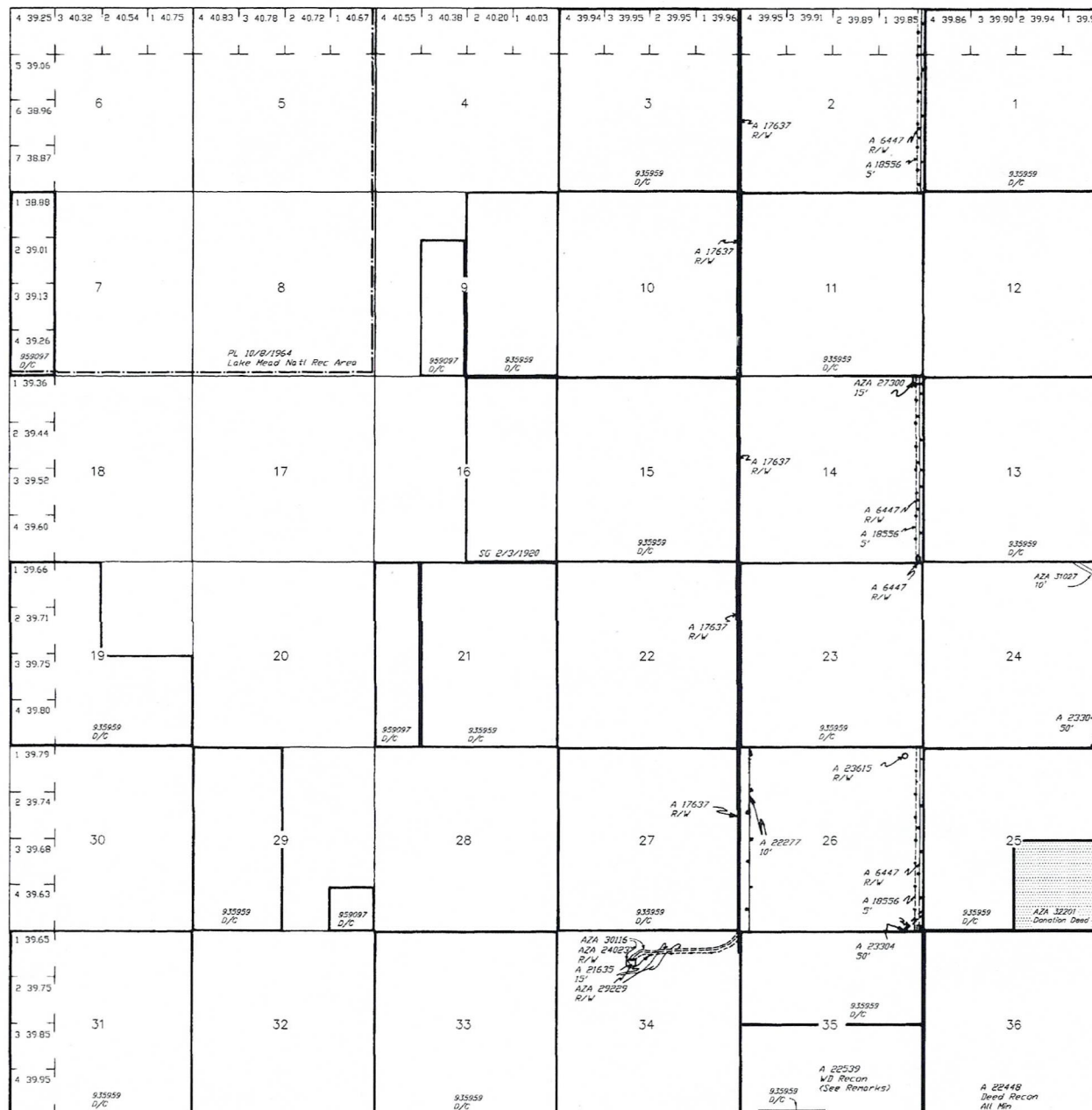
PLO 5048 Rev Wall SO 1/31/1903 - See HI  
Secs 5, 6

A22299 R/W 5'

Sec 22 : SE1/4SE1/4SE1/4 M&B

A22539 WD Recon  
Sec 35 : Excepted Pierce Ferry Rd

AZA 30747 R/W  
Soc 14 : NE1/4NE1/4SE1/4



Lat 35°50'57"N  
Long 114°03'45"W

SCALE in chains

**WARNING STATEMENT**  
This plot is the Bureau's Record of Title, and should be used only as a graphic display of the township survey data. Records hereon do not reflect title changes which may have been effected by lateral movements of rivers or other bodies of water. Refer to the cadastral surveys for official survey information.

CURRENT TO	GS	GSR Mer
10-15-2003	PV	T 29 N
		R 17 W